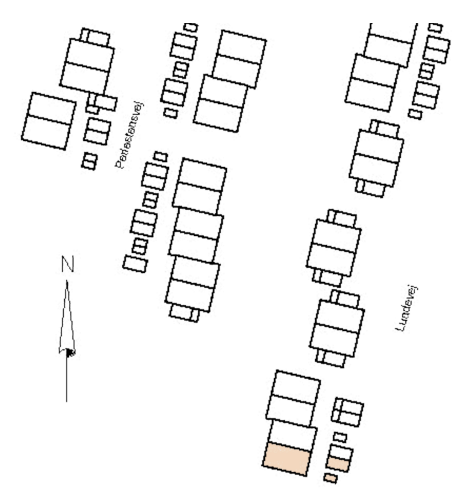


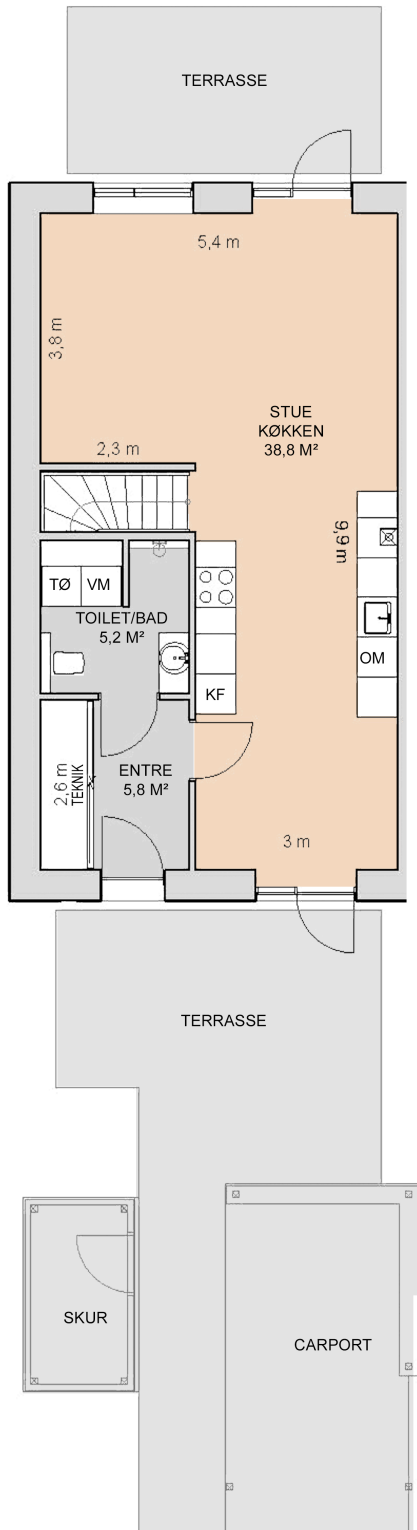
# STØBERIET TUNE

Lundevej 23

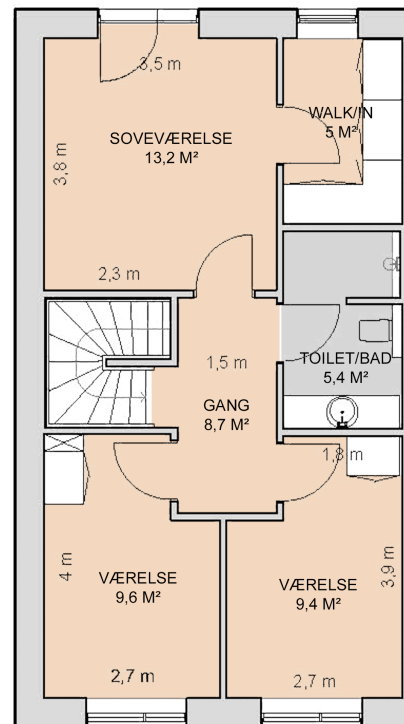
Antal værelser: 4  
Etage: St. og 1. sal  
BBR-areal: 128 m<sup>2</sup>  
Skur: 4,5 m<sup>2</sup>  
Carport: 14,5 m<sup>2</sup>  
Terrasse: 20 m<sup>2</sup>



## STUEPLAN



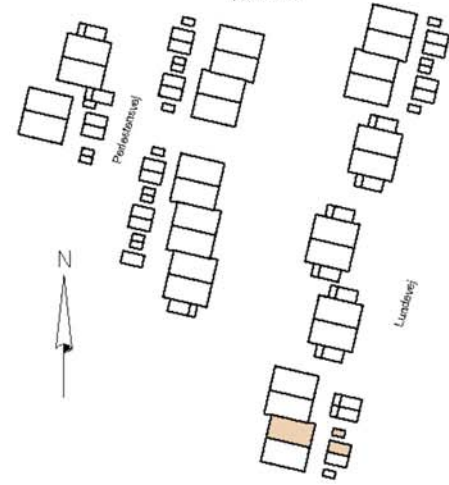
## 1. SAL



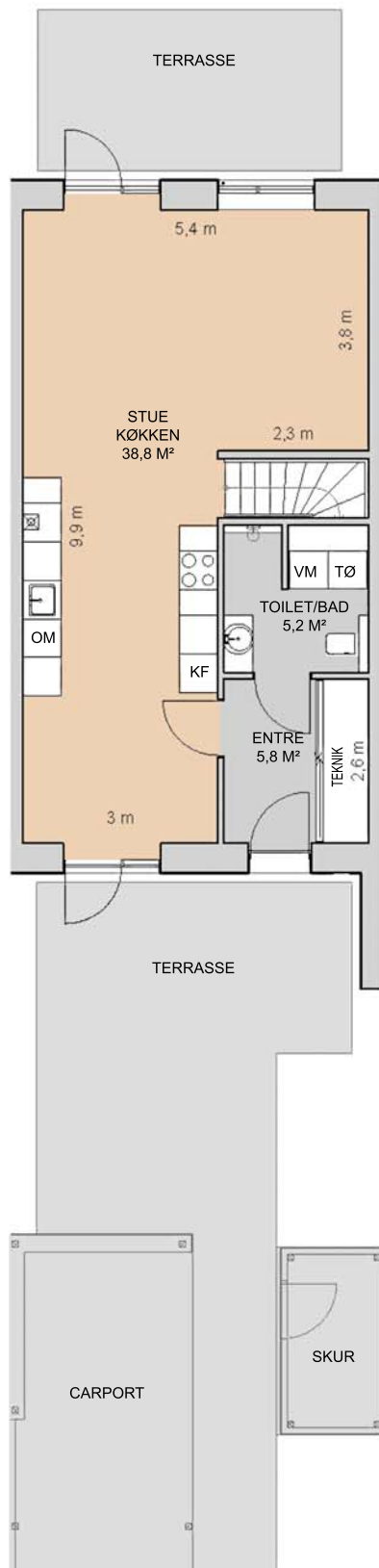
# STØBERIET TUNE

Lundevej 25

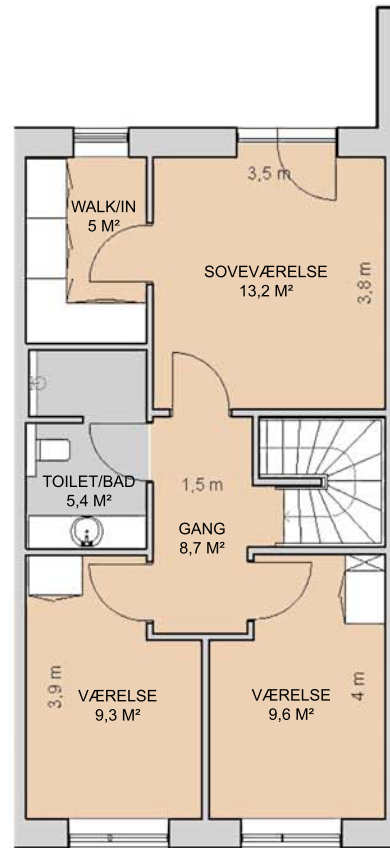
Antal værelser: 4  
Etage: St. og 1. sal  
BBR-areal: 122 m<sup>2</sup>  
Skur: 4,5 m<sup>2</sup>  
Carport: 14,5 m<sup>2</sup>  
Terrasse: 20 m<sup>2</sup>



## STUEPLAN



## 1. SAL

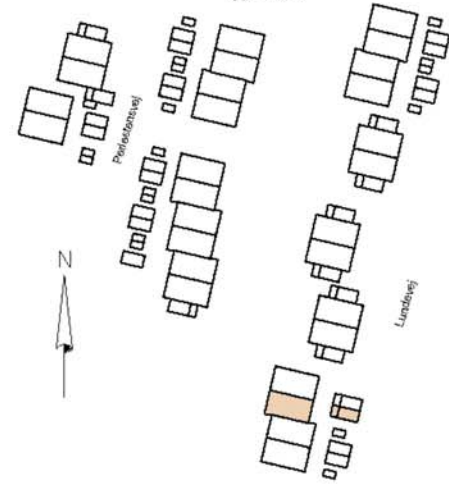




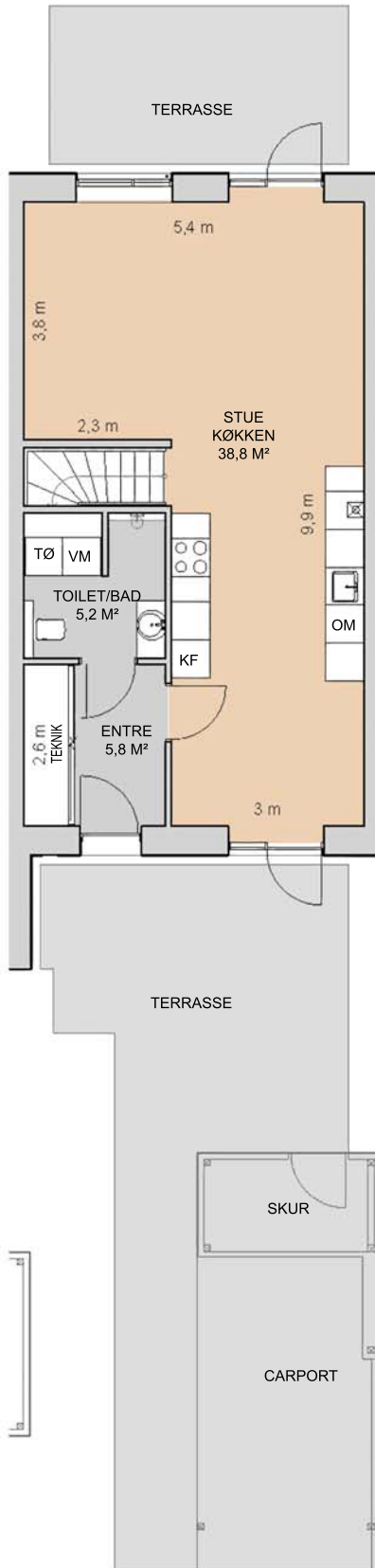
# STØBERIET TUNE

Lundevej 27

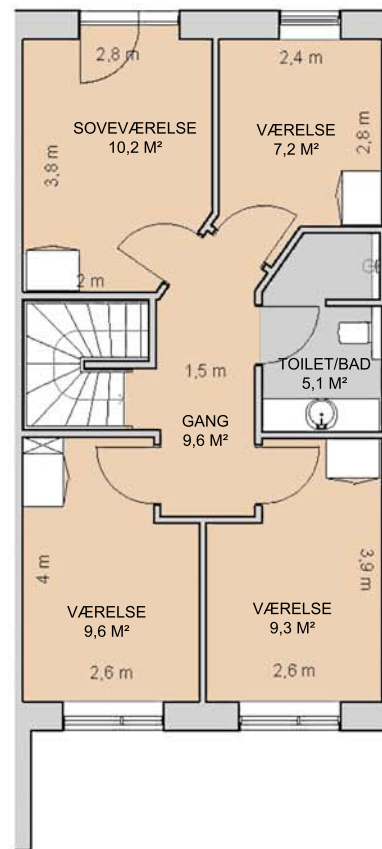
Antal værelser: 5  
Etage: St. og 1. sal  
BBR-areal: 122 m<sup>2</sup>  
Skur: 4,5 m<sup>2</sup>  
Carport: 14,5 m<sup>2</sup>  
Terrasse: 20 m<sup>2</sup>



## STUEPLAN



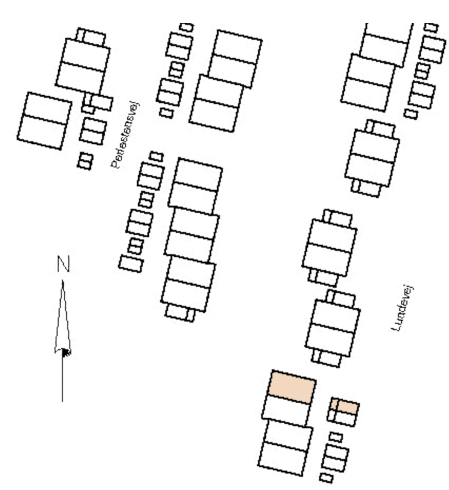
## 1. SAL



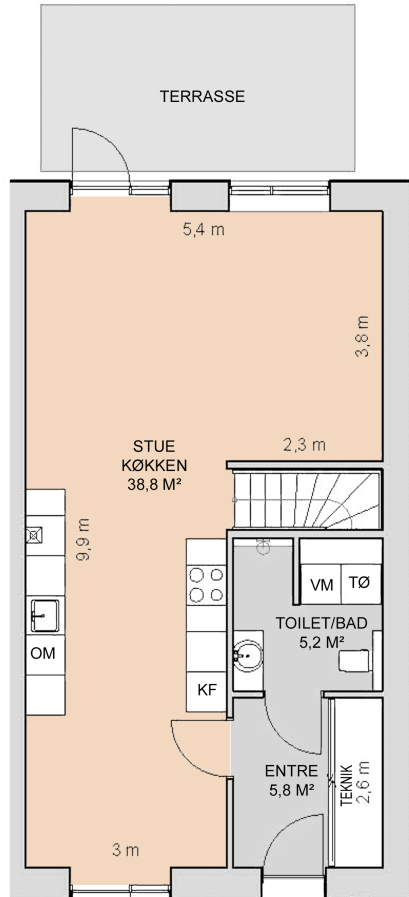
# STØBERIET TUNE

Lundevej 29

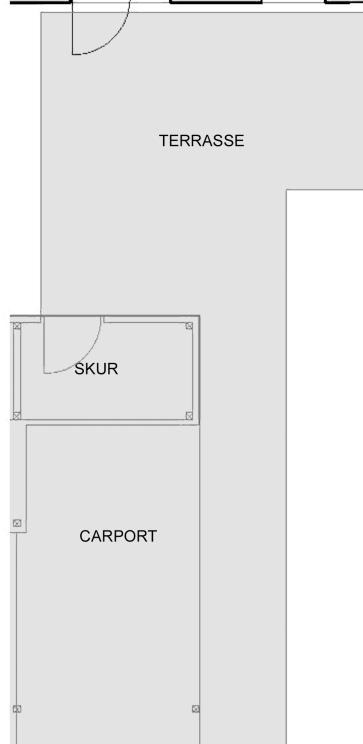
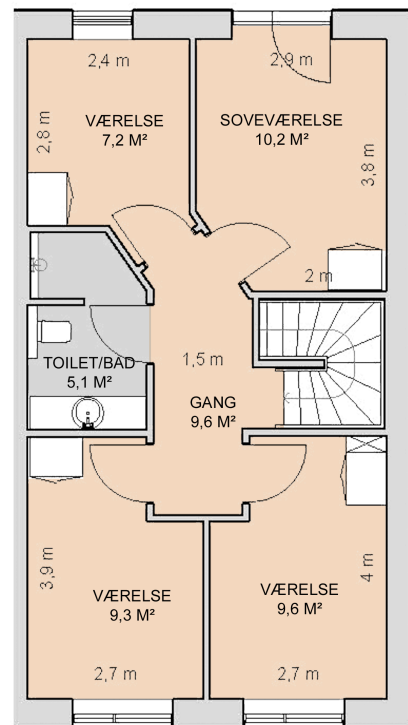
Antal værelser: 5  
Etage: St. og 1. sal  
BBR-areal: 128 m<sup>2</sup>  
Skur: 4,5 m<sup>2</sup>  
Carport: 14,5 m<sup>2</sup>  
Terrasse: 20 m<sup>2</sup>



## STUEPLAN



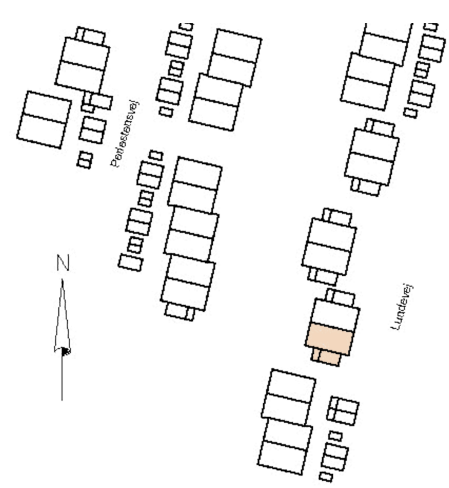
## 1. SAL



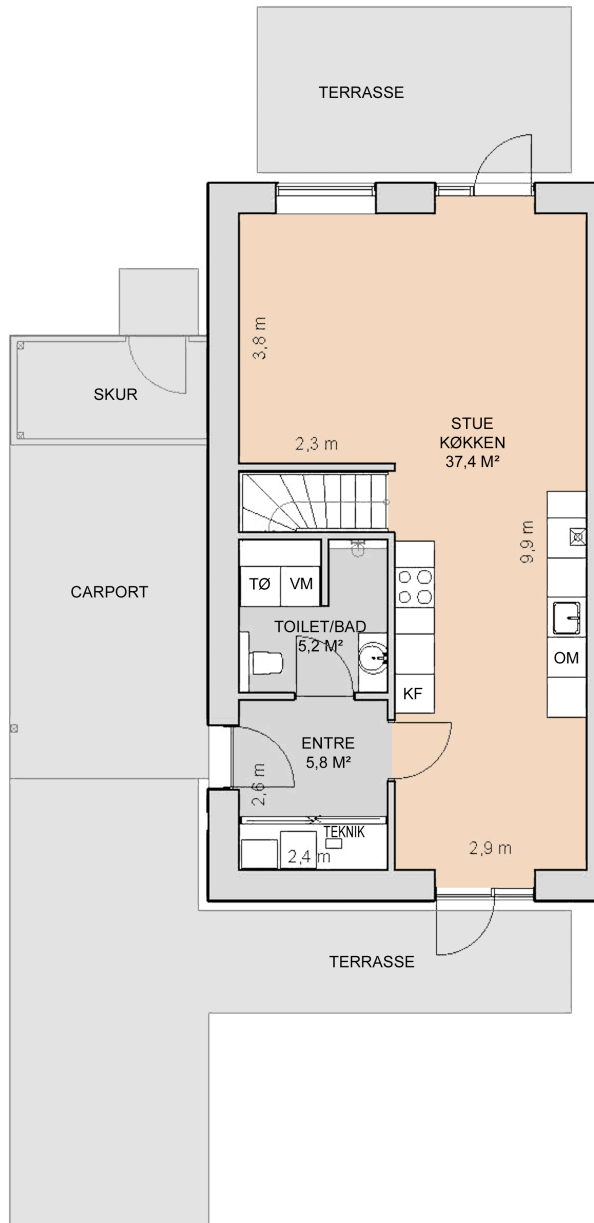
# STØBERIET TUNE

Lundevej 31

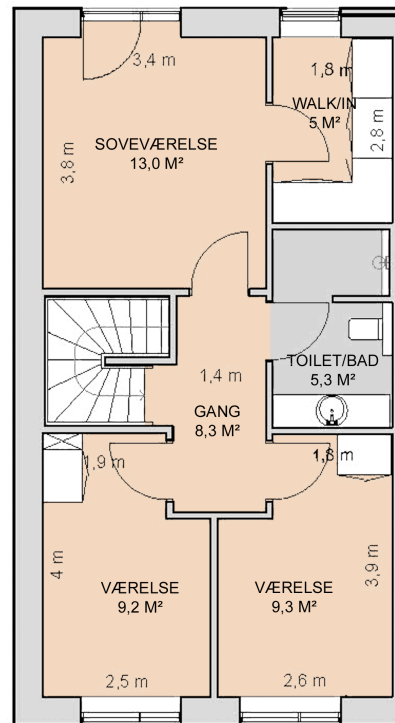
Antal værelser: 4  
Etage: St. og 1. sal  
BBR-areal: 125 m<sup>2</sup>  
Skur: 4,5 m<sup>2</sup>  
Carport: 14,5 m<sup>2</sup>  
Terrasse: 20 m<sup>2</sup>



## STUEPLAN



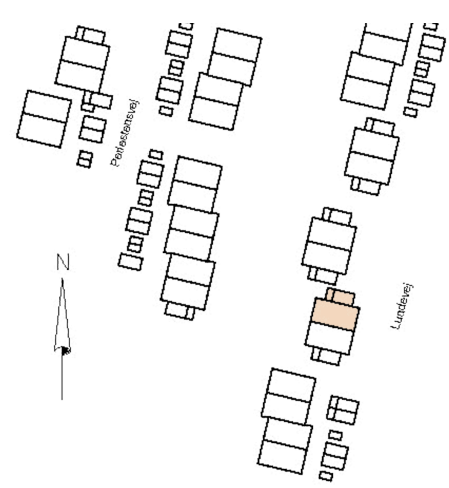
## 1. SAL



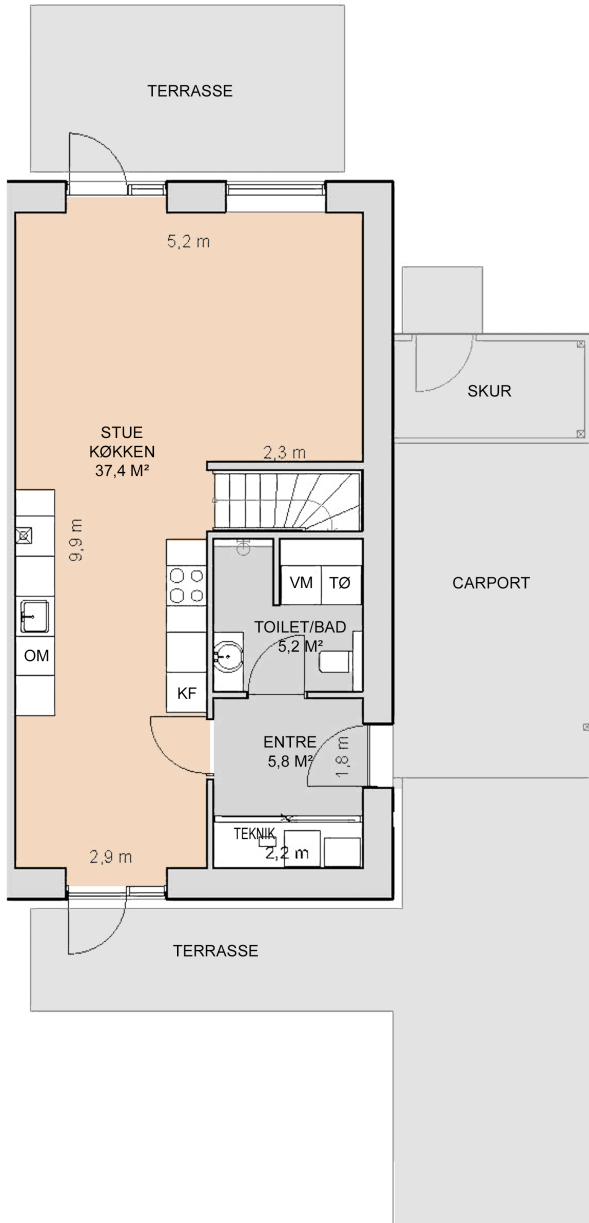
# STØBERIET TUNE

Lundevej 33

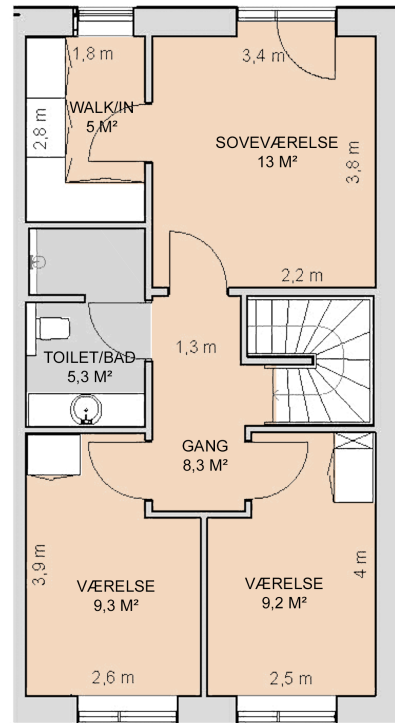
Antal værelser: 4  
Etage: St. og 1. sal  
BBR-areal: 124,4 m<sup>2</sup>  
Skur: 4,5 m<sup>2</sup>  
Carport: 14,5 m<sup>2</sup>  
Terrasse: 20 m<sup>2</sup>



## STUEPLAN



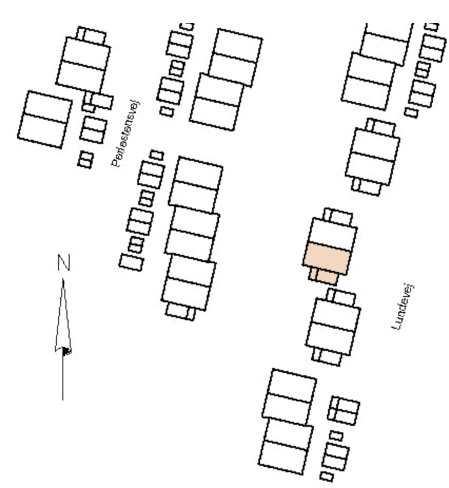
## 1. SAL



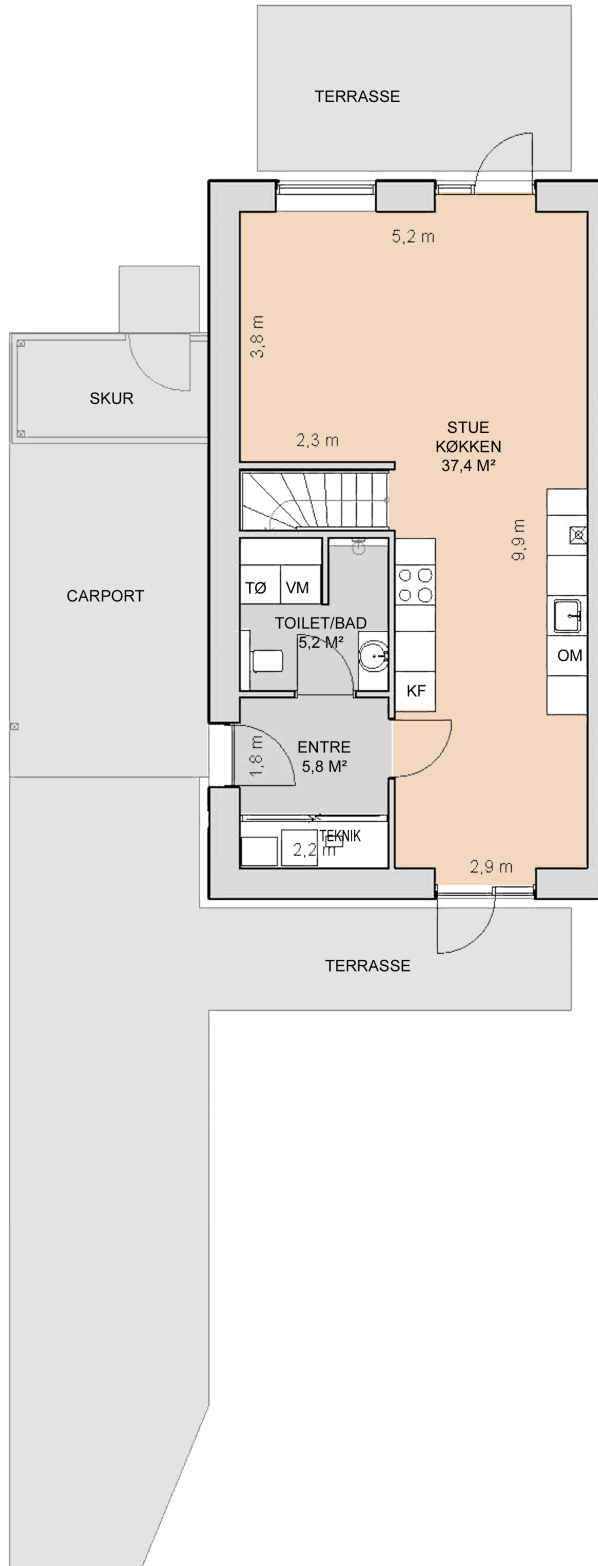
# STØBERIET TUNE

Lundevej 35

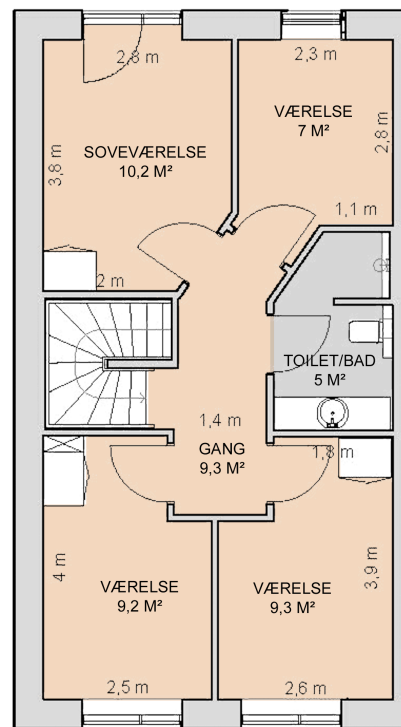
Antal værelser: 4  
Etage: St. og 1. sal  
BBR-areal: 125 m<sup>2</sup>  
Skur: 4,5 m<sup>2</sup>  
Carport: 14,5 m<sup>2</sup>  
Terrasse: 20 m<sup>2</sup>



## STUEPLAN



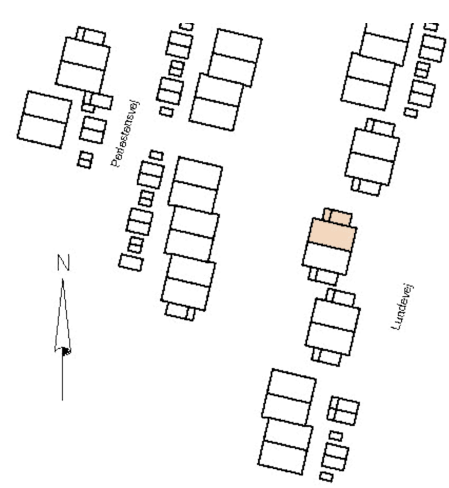
## 1. SAL



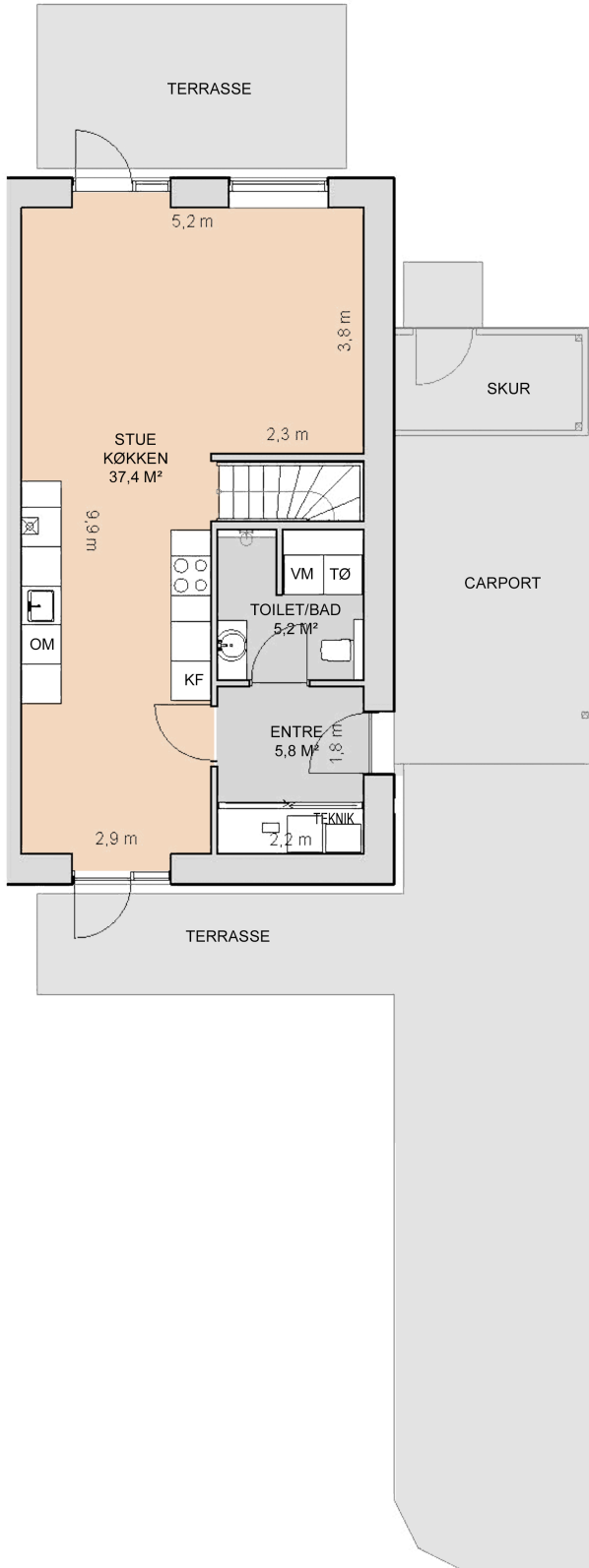
# STØBERIET TUNE

Lundevej 37

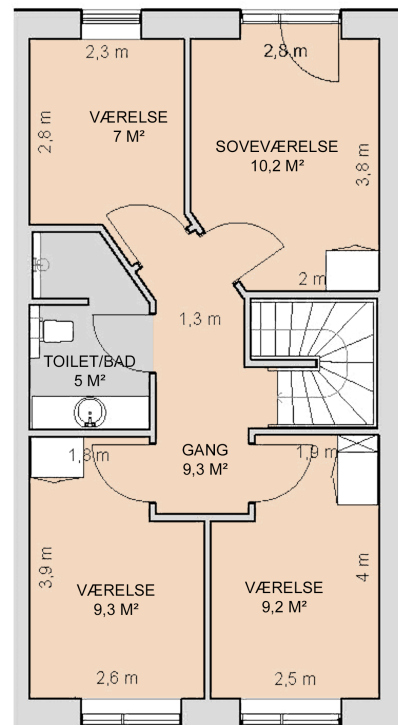
Antal værelser: 5  
Etage: St. og 1. sal  
BBR-areal: 125 m<sup>2</sup>  
Skur: 4,5 m<sup>2</sup>  
Carpport: 14,5 m<sup>2</sup>  
Terrasse: 20 m<sup>2</sup>



## STUEPLAN



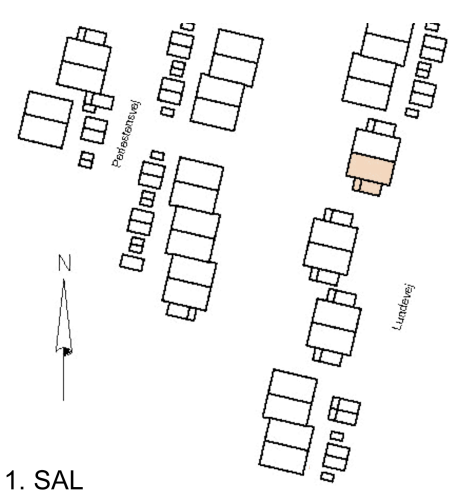
## 1. SAL



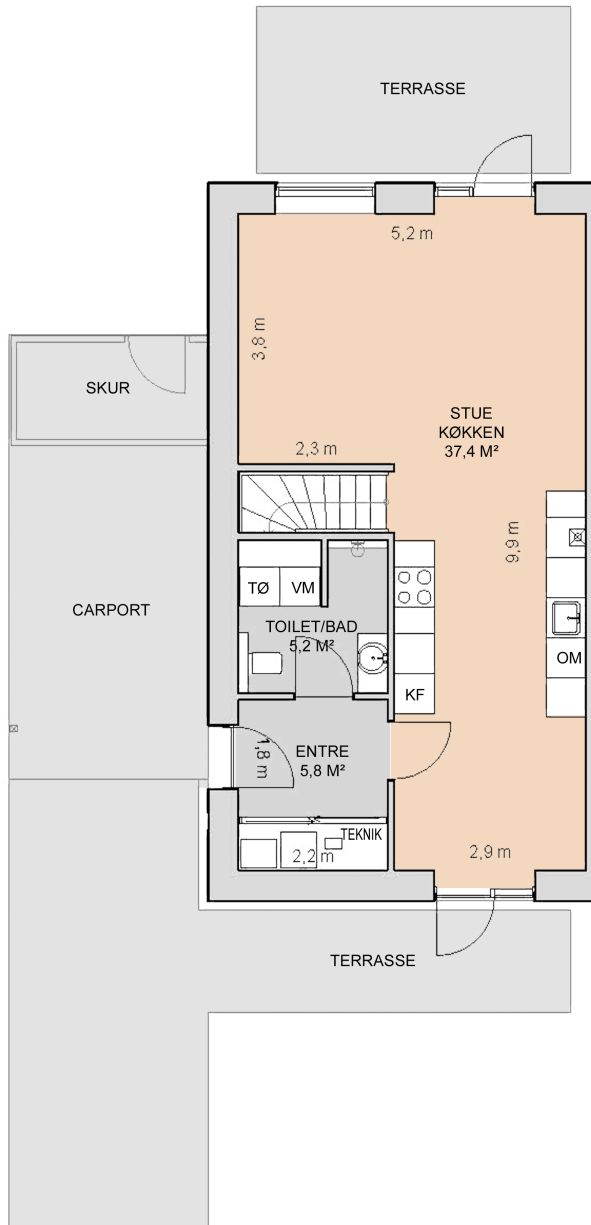
# STØBERIET TUNE

Lundevej 39

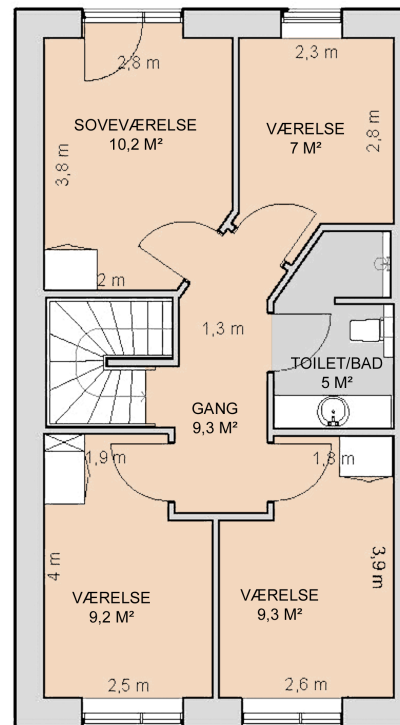
Antal værelser: 5  
Etage: St. og 1. sal  
BBR-areal: 125 m<sup>2</sup>  
Skur: 4,5 m<sup>2</sup>  
Carpport: 14,5 m<sup>2</sup>  
Terrasse: 20 m<sup>2</sup>



## STUEPLAN



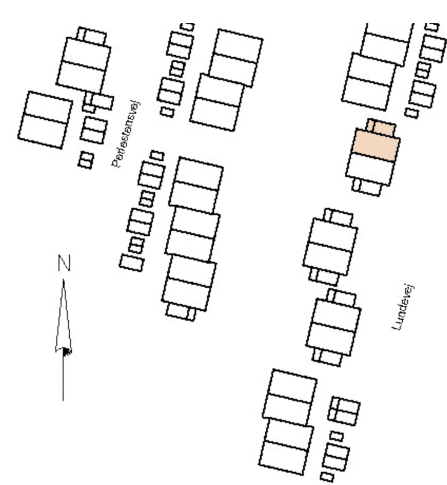
## 1. SAL



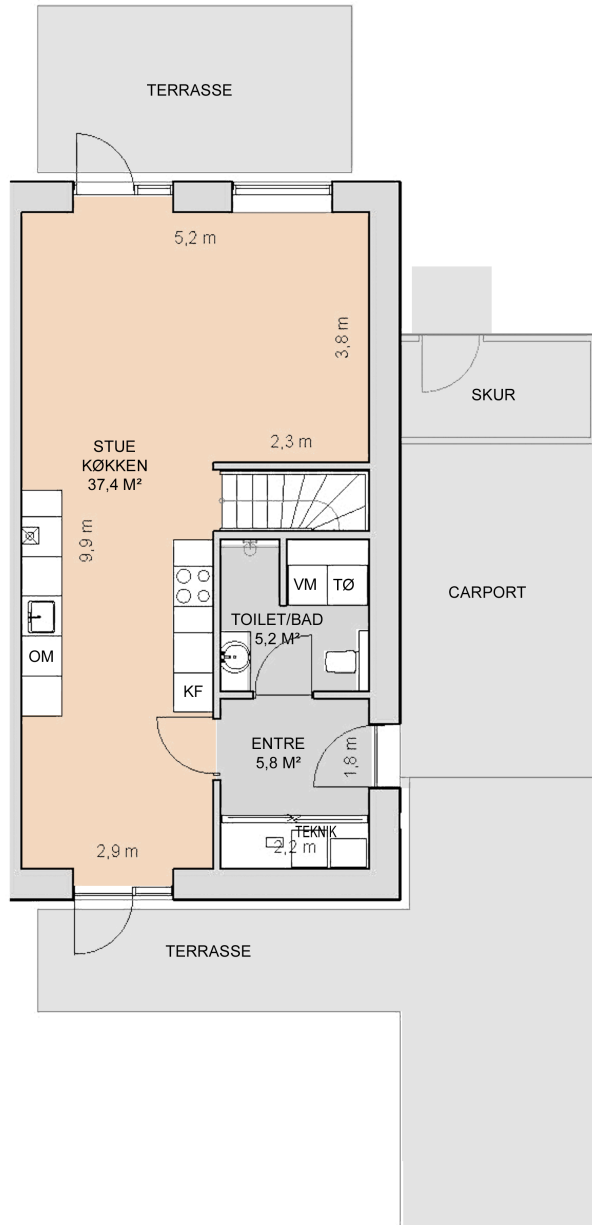
# STØBERIET TUNE

Lundevej 41

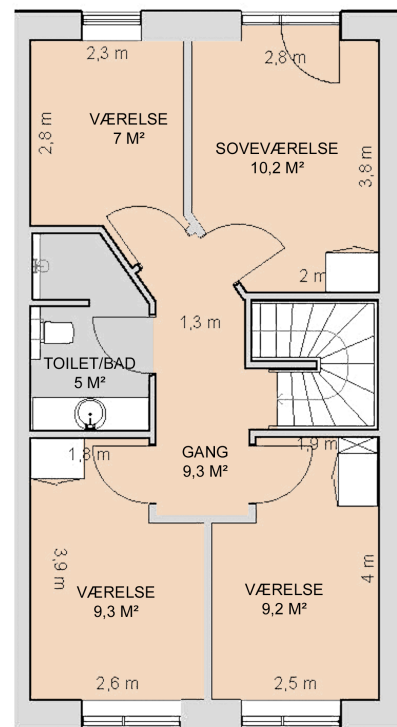
Antal værelser: 5  
Etage: St. og 1. sal  
BBR-areal: 125 m<sup>2</sup>  
Skur: 4,5 m<sup>2</sup>  
Carpport: 14,5 m<sup>2</sup>  
Terrasse: 20 m<sup>2</sup>



## STUEPLAN



## 1. SAL

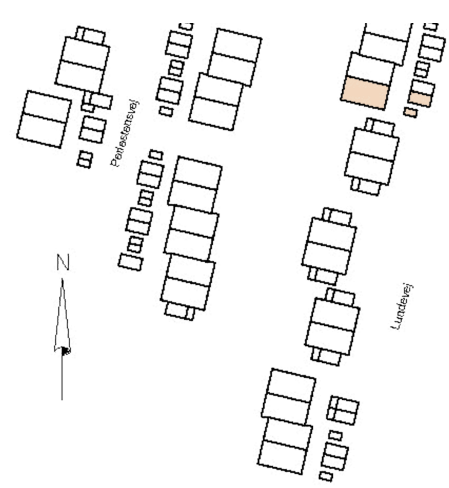




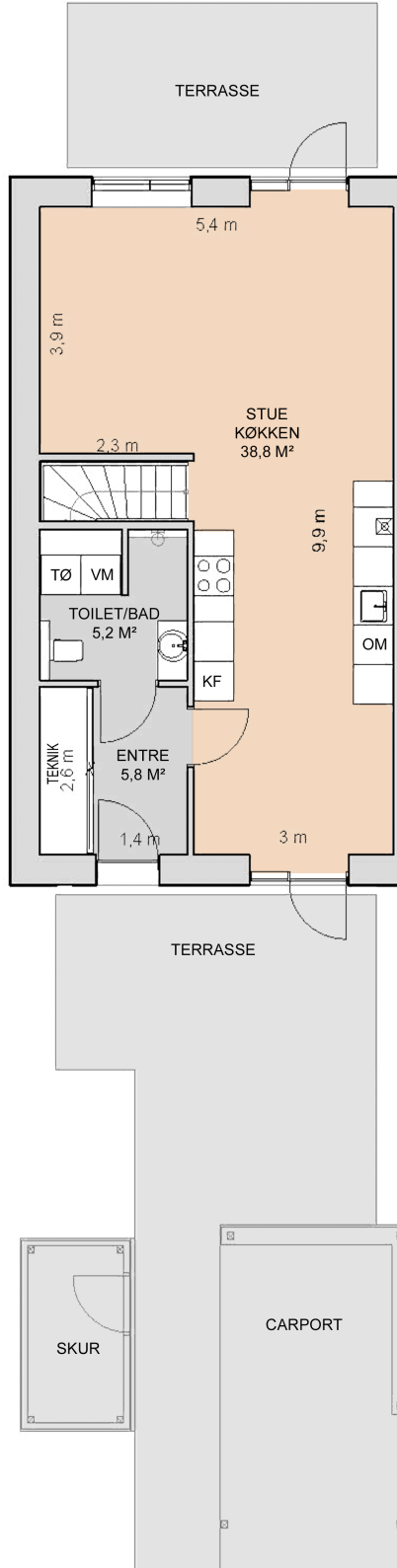
# STØBERIET TUNE

Lundevej 43

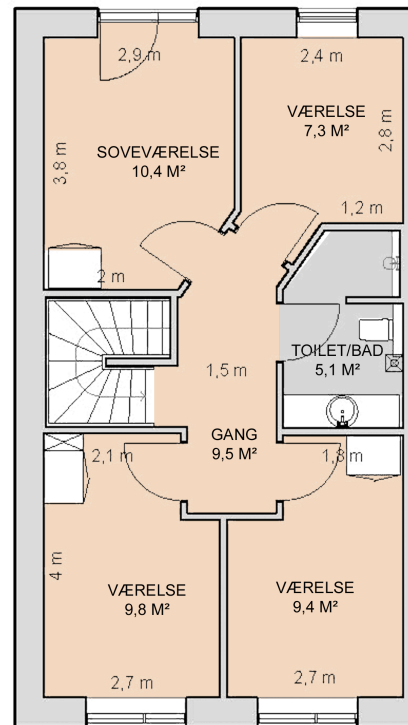
Antal værelser: 5  
Etage: St. og 1. sal  
BBR-areal: 128 m<sup>2</sup>  
Skur: 4,5 m<sup>2</sup>  
Carpport: 14,5 m<sup>2</sup>  
Terrasse: 20 m<sup>2</sup>



## STUEPLAN



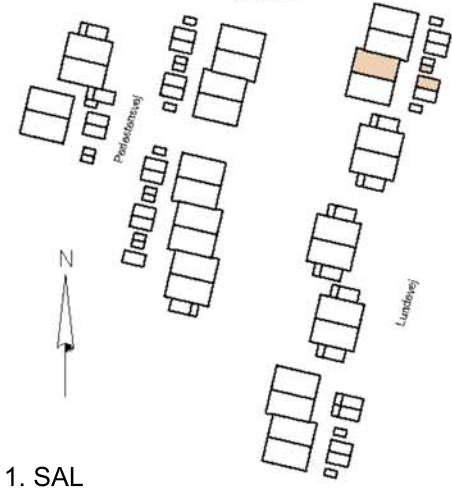
## 1. SAL



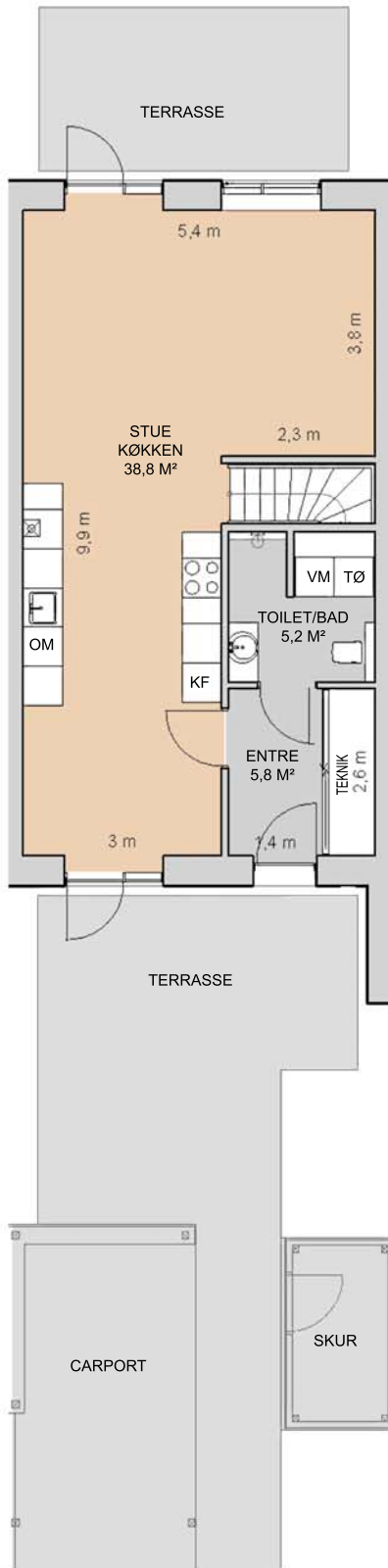
# STØBERIET TUNE

Lundevej 45

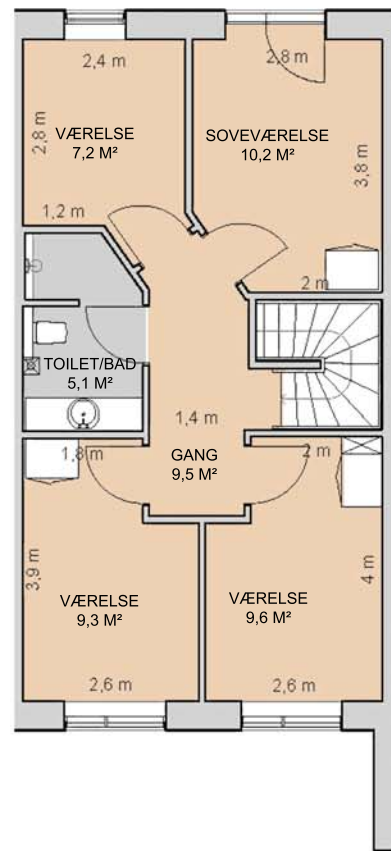
Antal værelser: 5  
Etage: St. og 1. sal  
BBR-areal: 122 m<sup>2</sup>  
Skur: 4,5 m<sup>2</sup>  
Carport: 14,5 m<sup>2</sup>  
Terrasse: 20 m<sup>2</sup>



## STUEPLAN



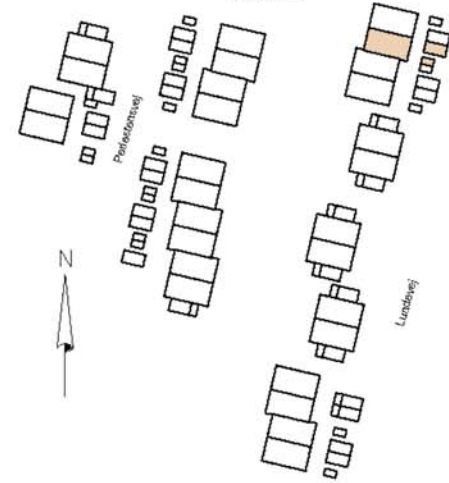
## 1. SAL



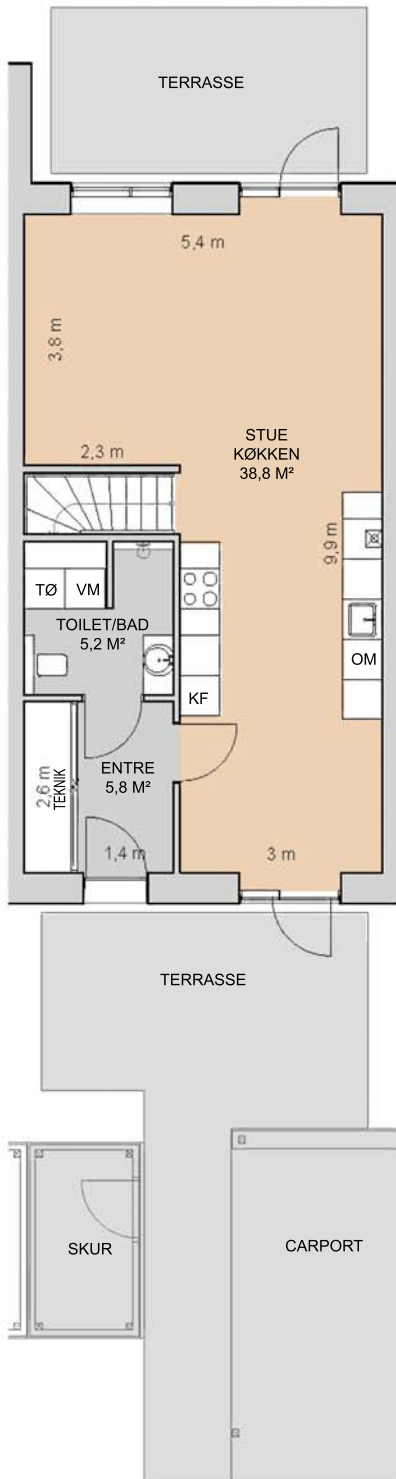
# STØBERIET TUNE

Lundevej 47

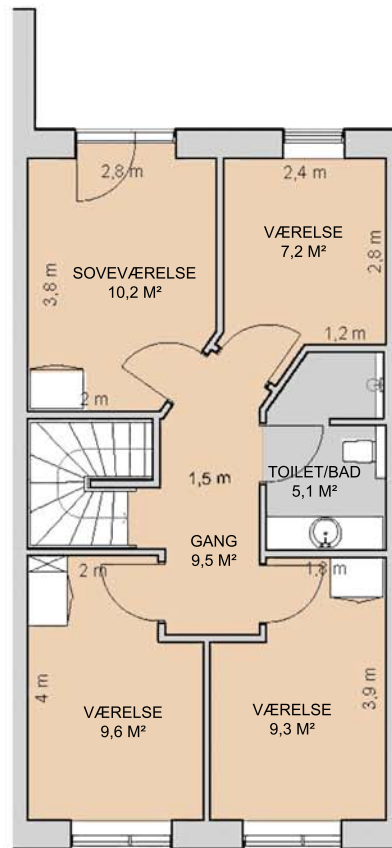
Antal værelser: 5  
Etage: St. og 1. sal  
BBR-areal: 122 m<sup>2</sup>  
Skur: 4,5 m<sup>2</sup>  
Carport: 14,5 m<sup>2</sup>  
Terrasse: 20 m<sup>2</sup>



## STUEPLAN



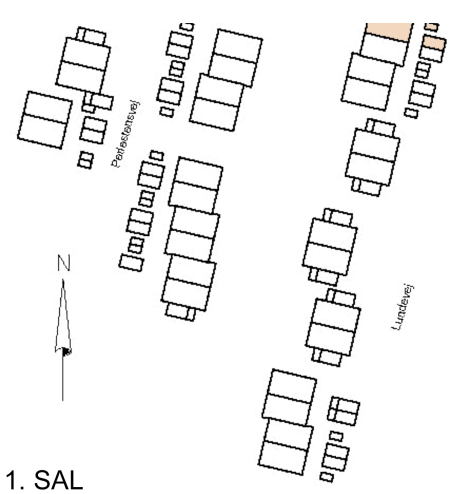
## 1. SAL



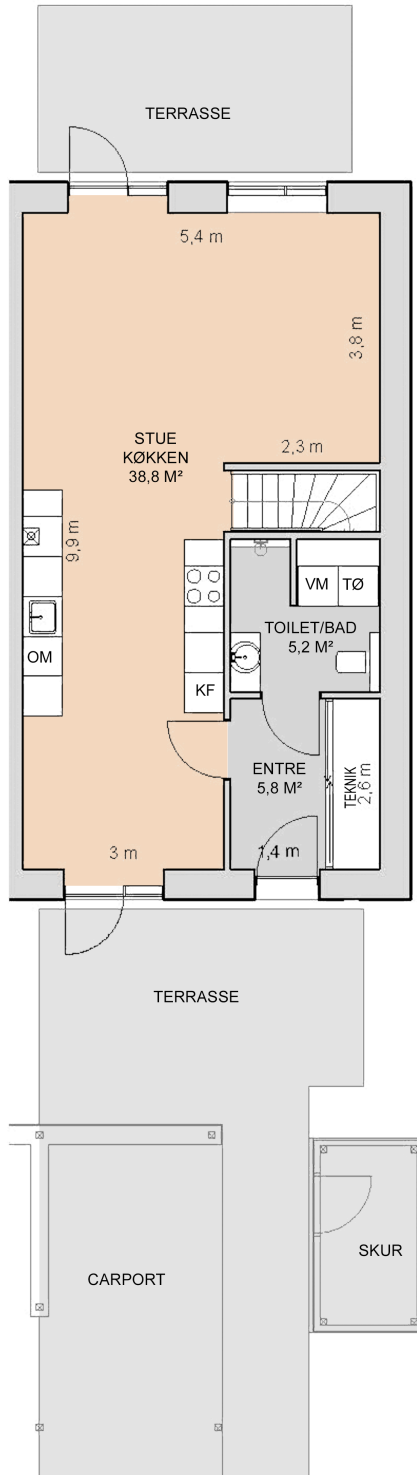
# STØBERIET TUNE

Lundevej 49

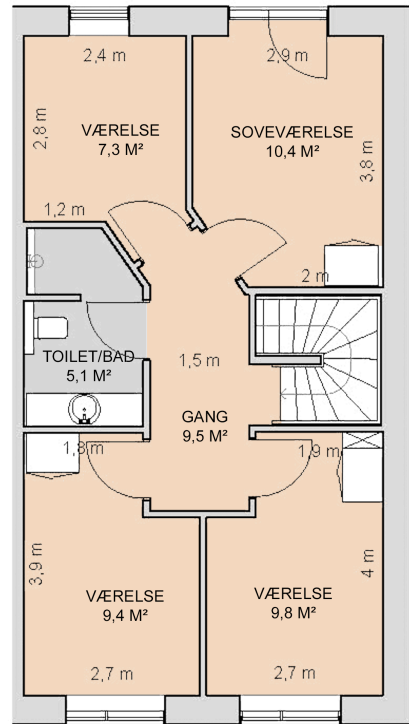
Antal værelser: 5  
Etage: St. og 1. sal  
BBR-areal: 128 m<sup>2</sup>  
Skur: 4,5 m<sup>2</sup>  
Carport: 14,5 m<sup>2</sup>  
Terrasse: 20 m<sup>2</sup>



## STUEPLAN



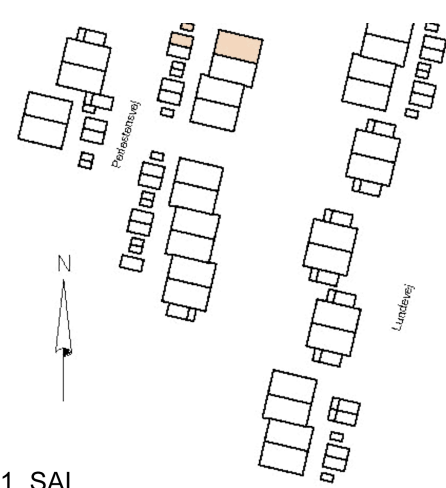
## 1. SAL



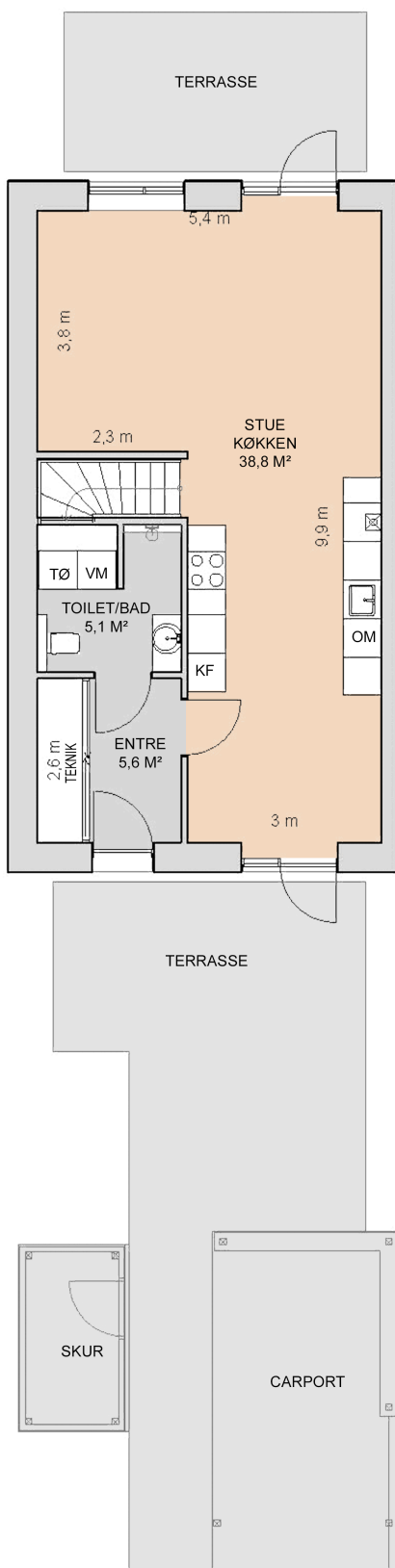
# STØBERIET TUNE

Perlestensvej 1

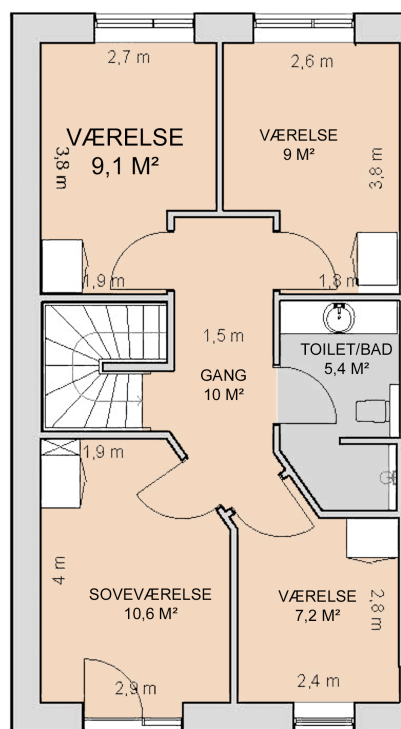
Antal værelser: 5  
Etage: St. og 1. sal  
BBR-areal: 128 m<sup>2</sup>  
Skur: 4,5 m<sup>2</sup>  
Carport: 14,5 m<sup>2</sup>  
Terrasse: 20 m<sup>2</sup>



## STUEPLAN



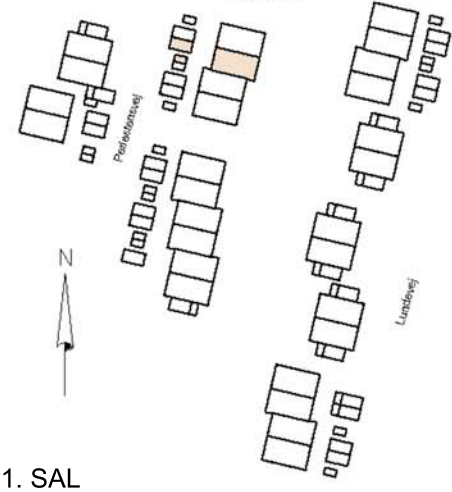
## 1. SAL



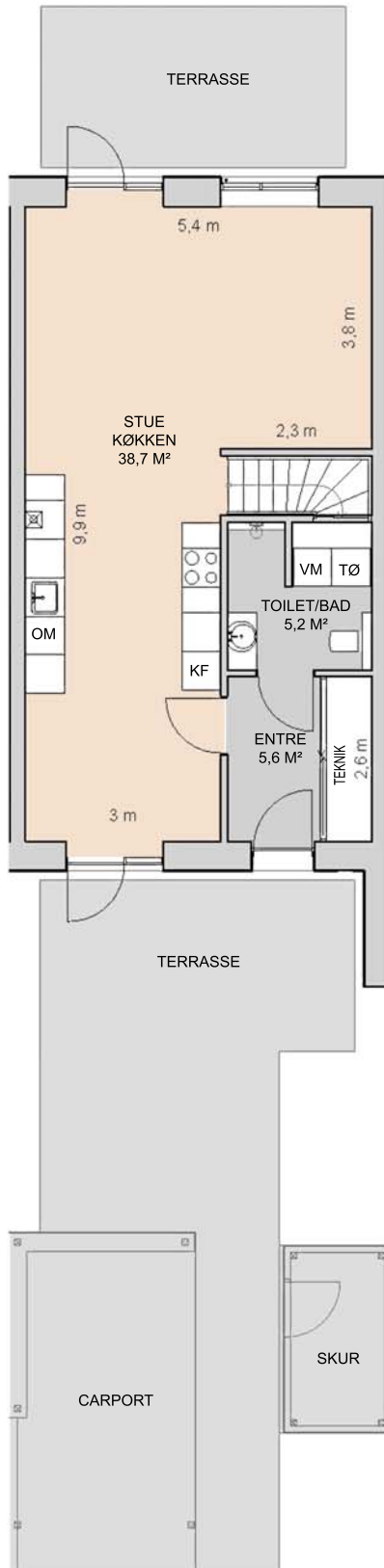
# STØBERIET TUNE

Perlestensvej 3

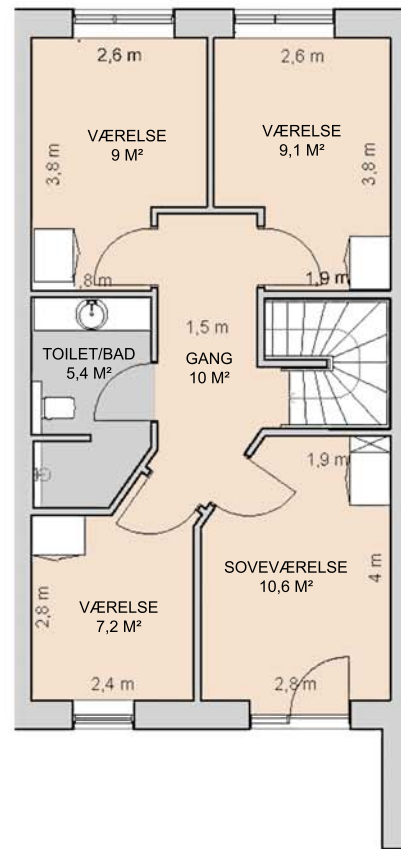
Antal værelser: 5  
Etage: St. og 1. sal  
BBR-areal: 122 m<sup>2</sup>  
Skur: 4,5 m<sup>2</sup>  
Carport: 14,5 m<sup>2</sup>  
Terrasse: 20 m<sup>2</sup>



## STUEPLAN



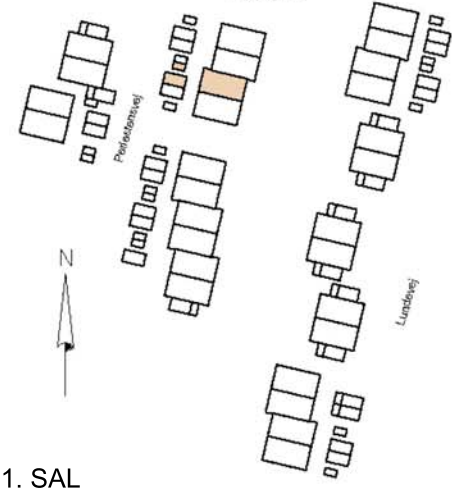
## 1. SAL



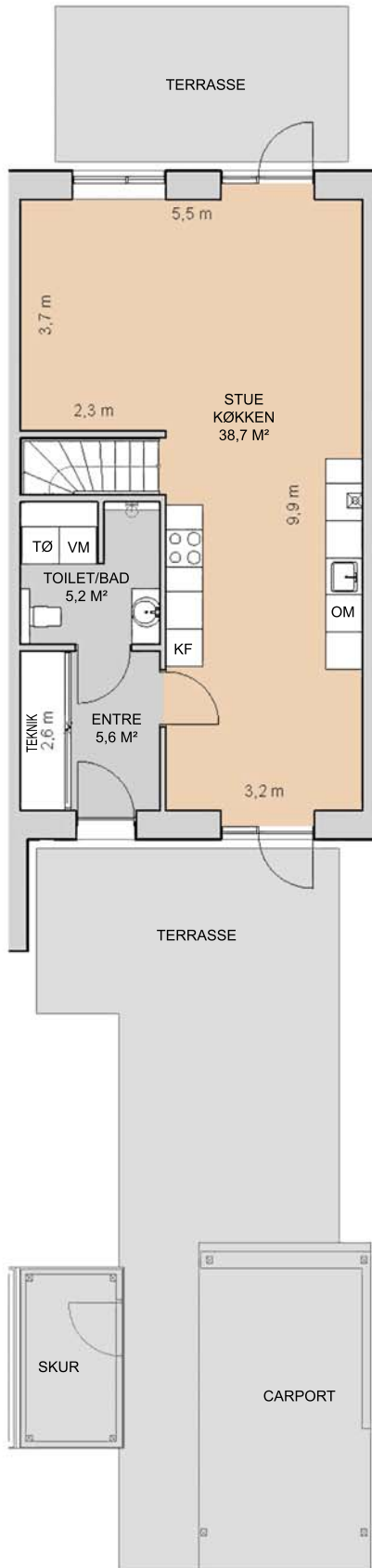
# STØBERIET TUNE

Perlestensvej 5

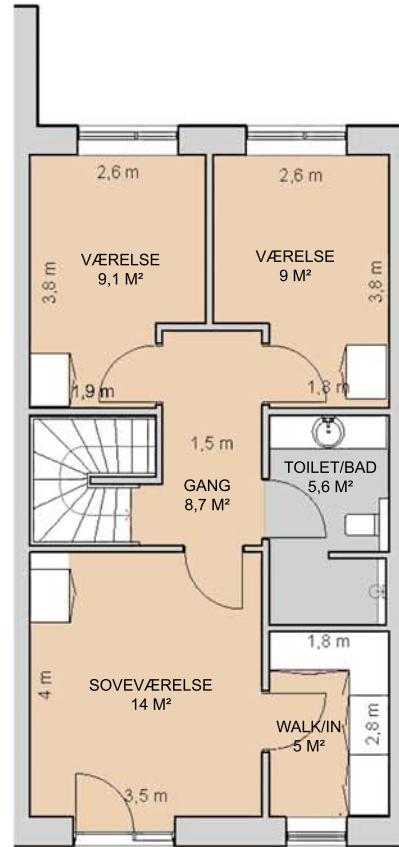
Antal værelser: 4  
Etage: St. og 1. sal  
BBR-areal: 122 m<sup>2</sup>  
Skur: 4,5 m<sup>2</sup>  
Carport: 14,5 m<sup>2</sup>  
Terrasse: 20 m<sup>2</sup>



## STUEPLAN



## 1. SAL



# STØBERIET TUNE

Perlestensvej 7

Antal værelser: 4

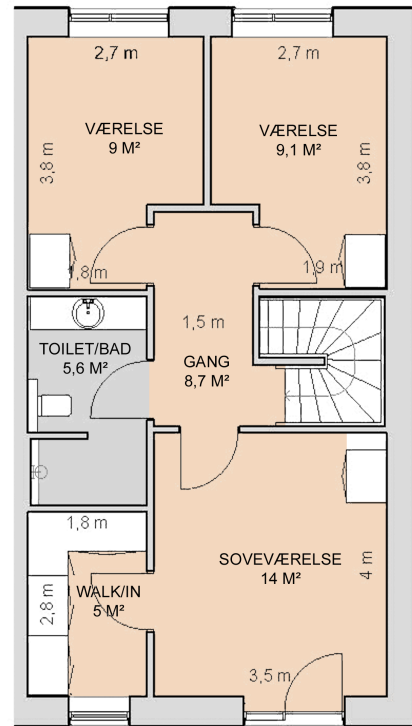
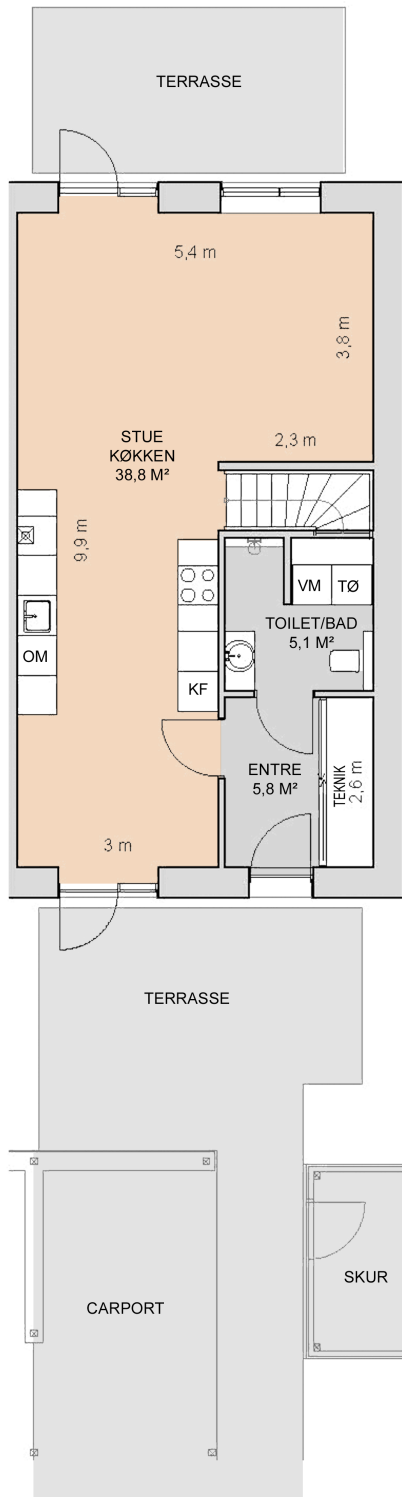
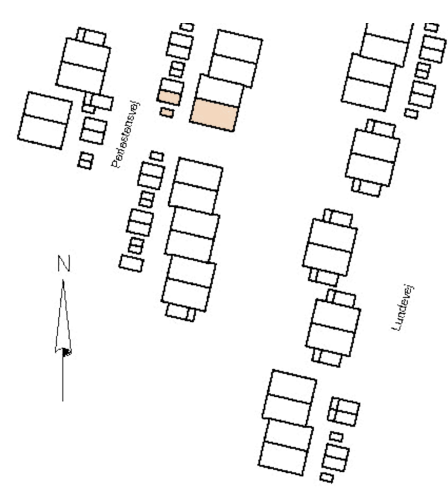
Etage: St. og 1. sal

BBR-areal: 128 m<sup>2</sup>

Skur: 4,5 m<sup>2</sup>

Carport: 14,5 m<sup>2</sup>

Terrasse: 20 m<sup>2</sup>

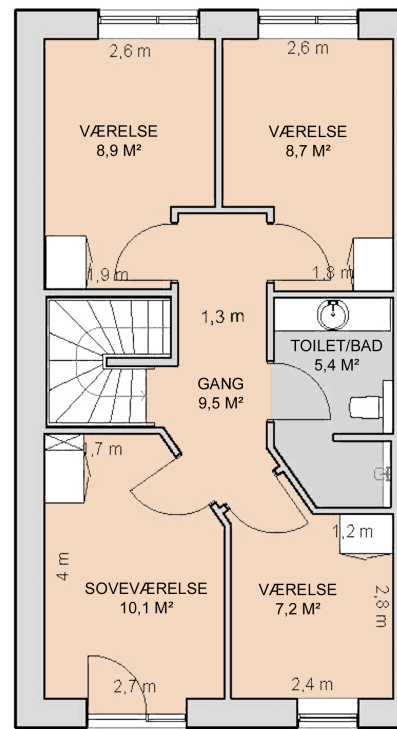
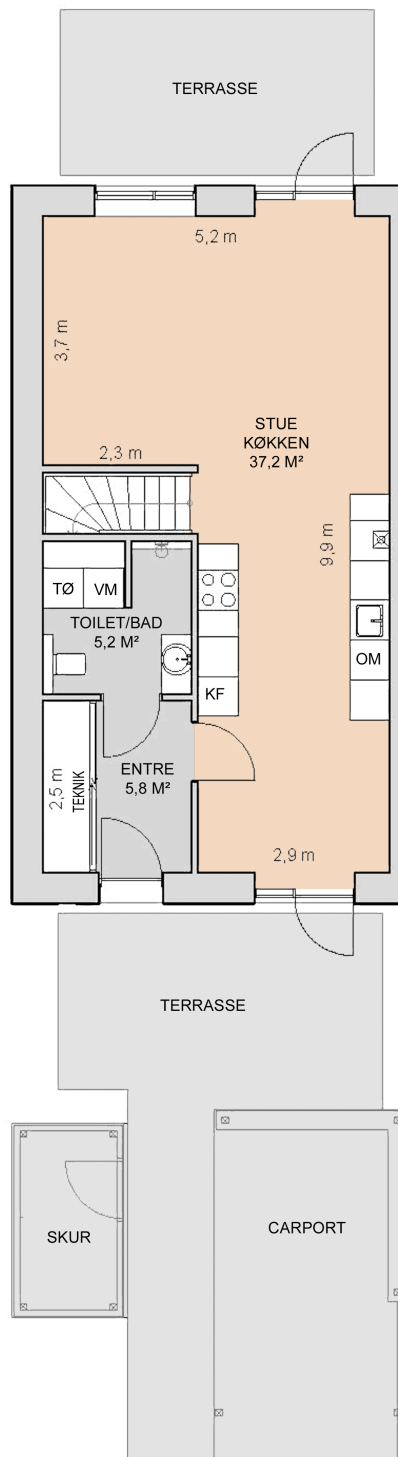
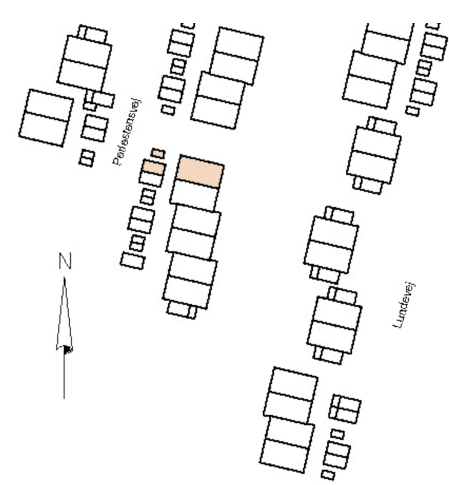




# STØBERIET TUNE

Perlestensvej 9

Antal værelser: 5  
Etage: St. og 1. sal  
BBR-areal: 125 m<sup>2</sup>  
Skur: 4,5 m<sup>2</sup>  
Carpport: 14,5 m<sup>2</sup>  
Terrasse: 20 m<sup>2</sup>



# STØBERIET TUNE

Perlestensvej 11

Antal værelser: 5

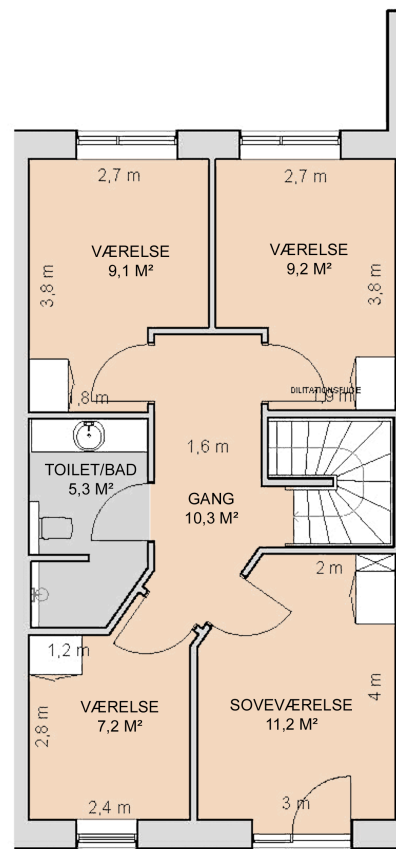
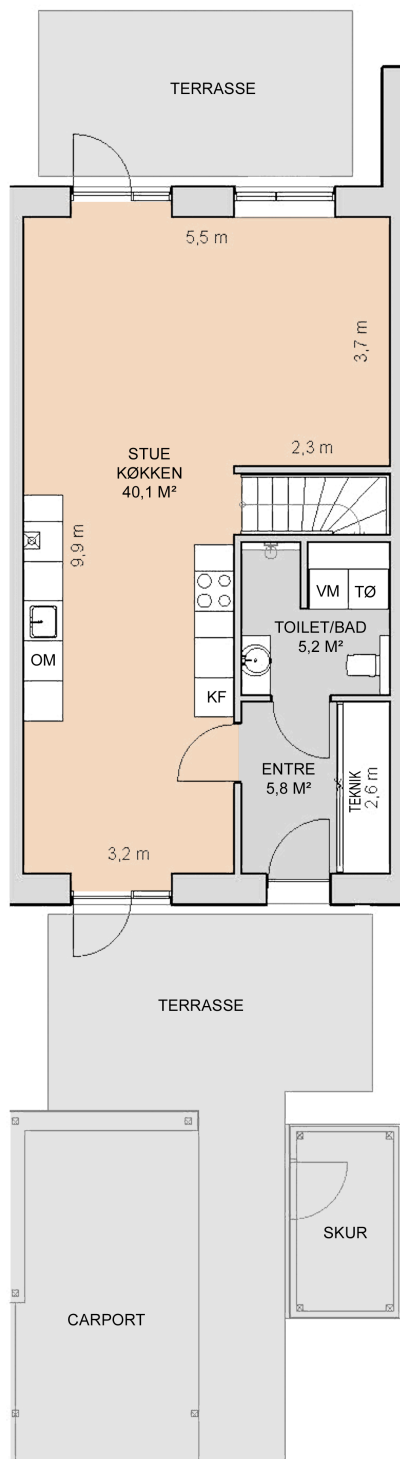
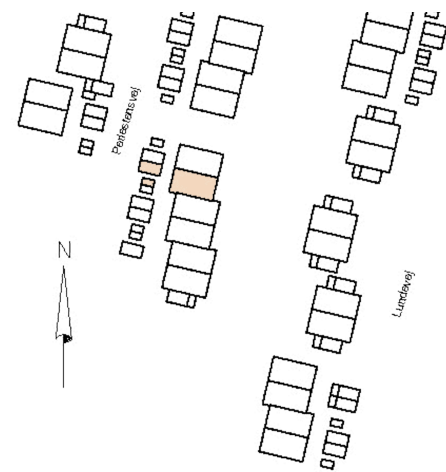
Etage: St. og 1. sal

BBR-areal: 125 m<sup>2</sup>

Skur: 4,5 m<sup>2</sup>

Carport: 14,5 m<sup>2</sup>

Terrasse: 20 m<sup>2</sup>



# STØBERIET TUNE

Perlestensvej 13

Antal værelser: 5

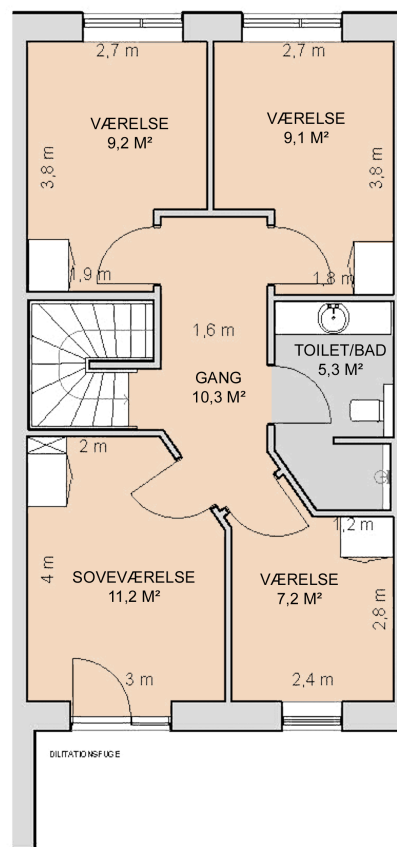
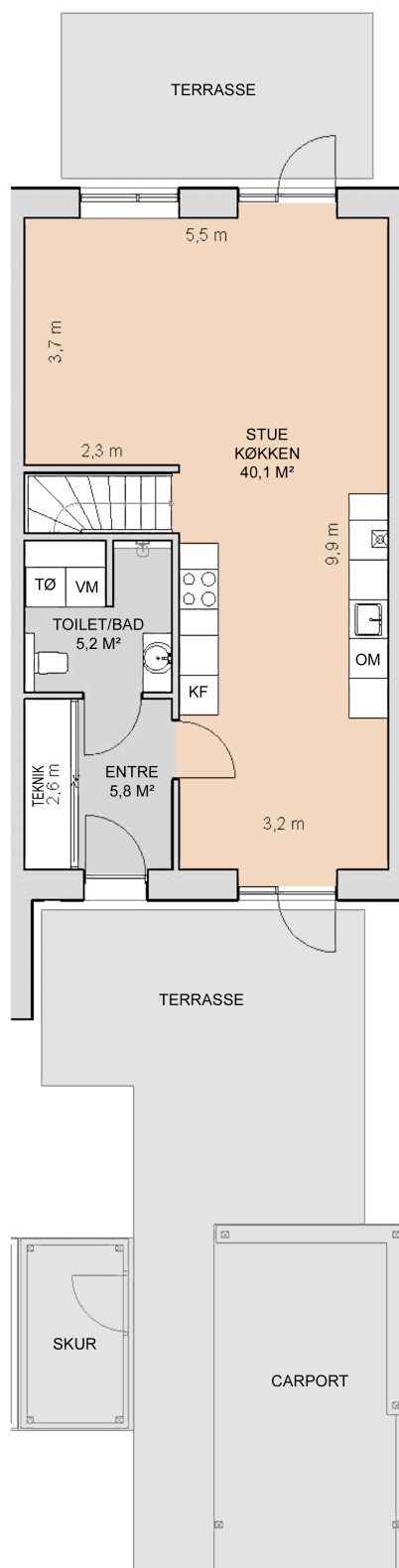
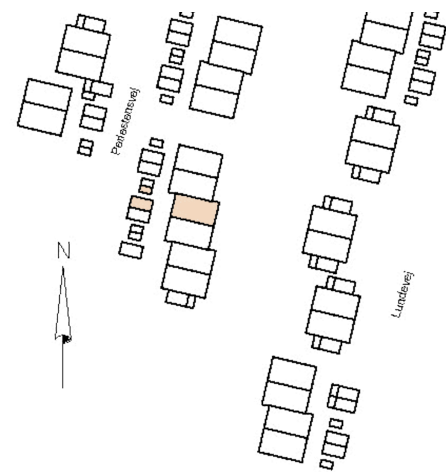
Etage: St. og 1. sal

BBR-areal: 126 m<sup>2</sup>

Skur: 4,5 m<sup>2</sup>

Carport: 14,5 m<sup>2</sup>

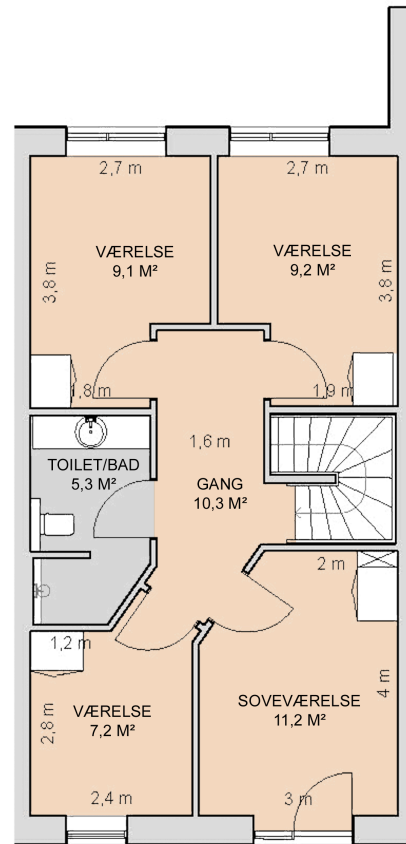
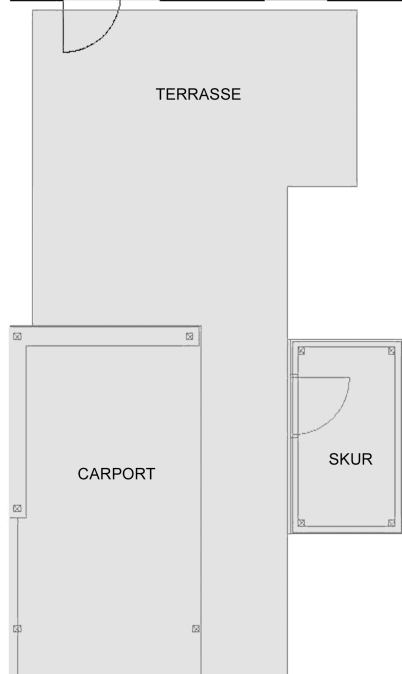
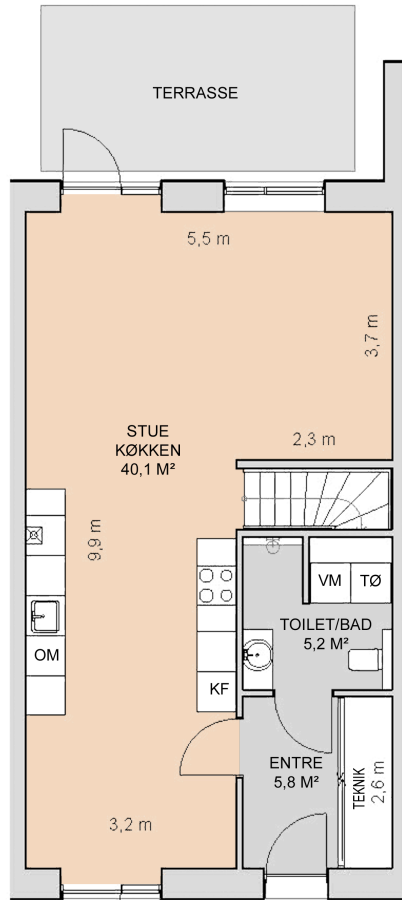
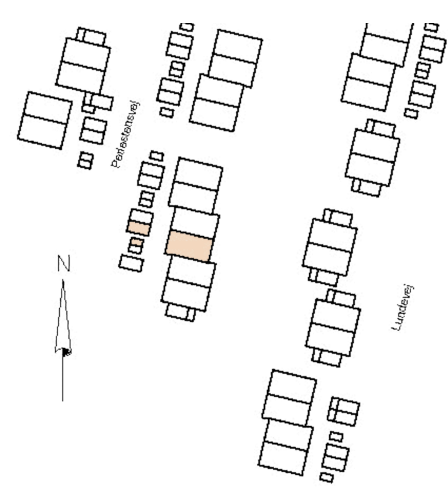
Terrasse: 20 m<sup>2</sup>



# STØBERIET TUNE

Perlestensvej 15

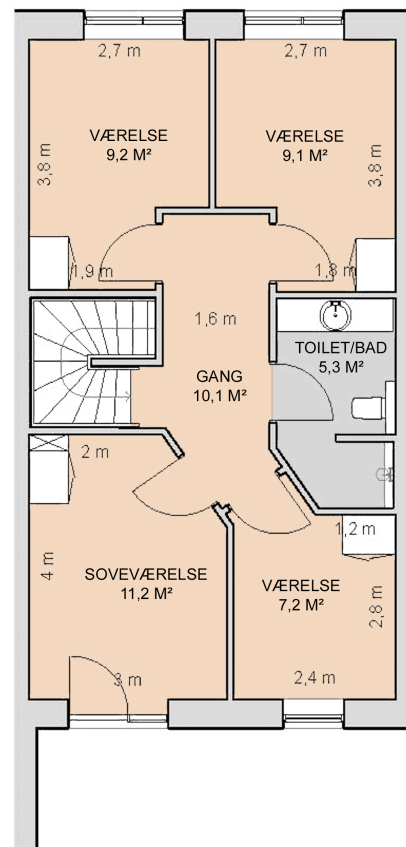
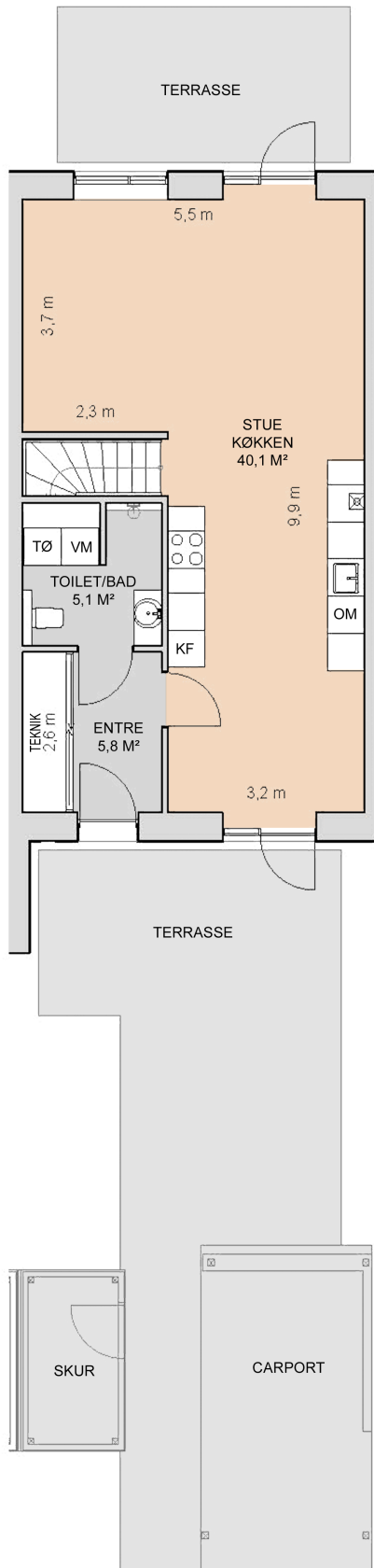
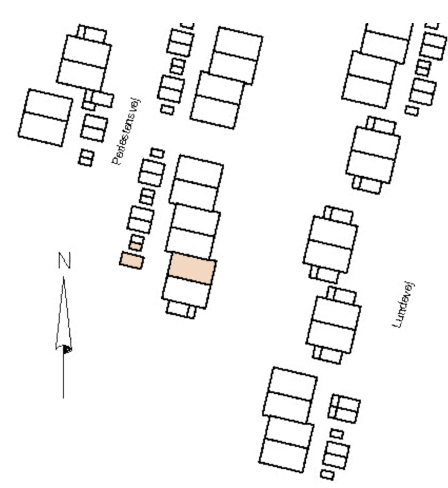
Antal værelser: 5  
Etage: St. og 1. sal  
BBR-areal: 126 m<sup>2</sup>  
Skur: 4,5 m<sup>2</sup>  
Carpport: 14,5 m<sup>2</sup>  
Terrasse: 20 m<sup>2</sup>



# STØBERIET TUNE

Perlestensvej 17

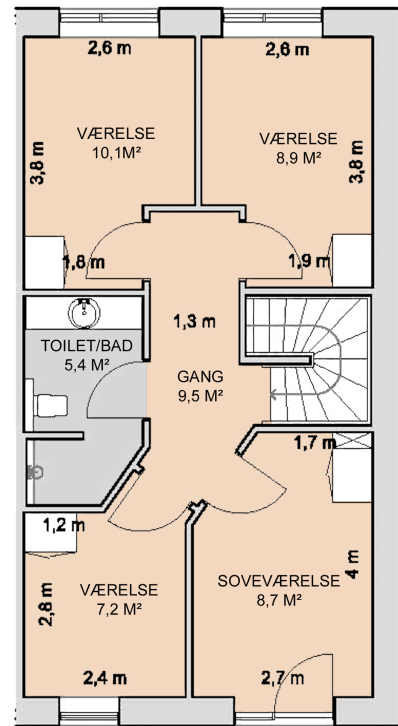
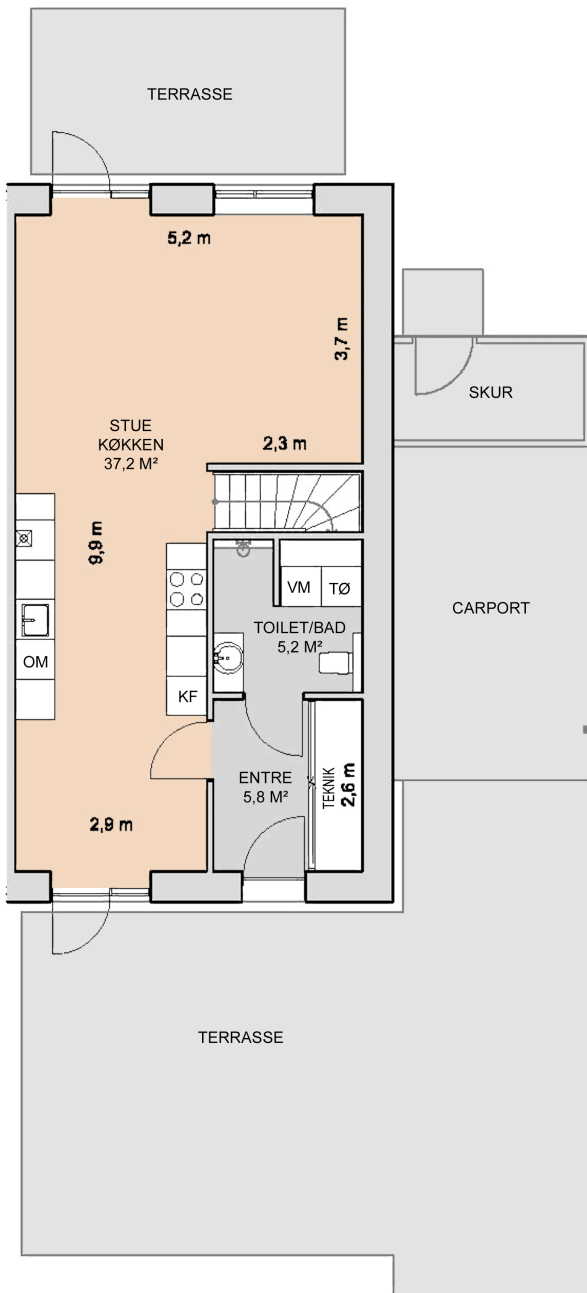
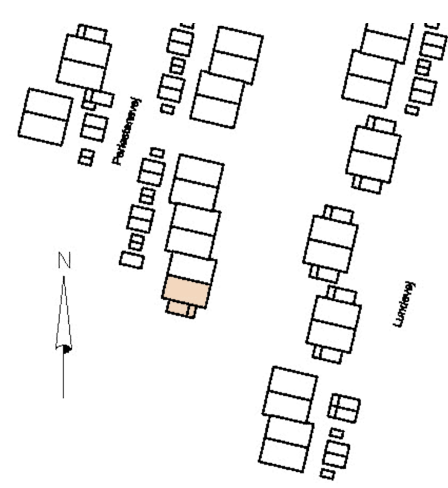
Antal værelser: 5  
Etage: St. og 1. sal  
BBR-areal: 125 m<sup>2</sup>  
Skur: 4,5 m<sup>2</sup>  
Carport: 14,5 m<sup>2</sup>  
Terrasse: 20 m<sup>2</sup>



# STØBERIET TUNE

Perlestensvej 19

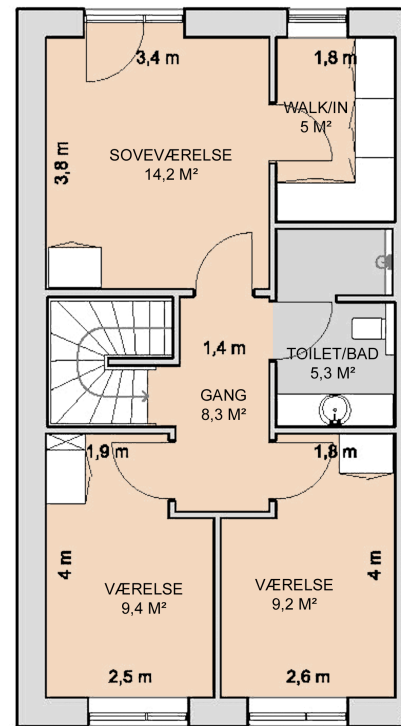
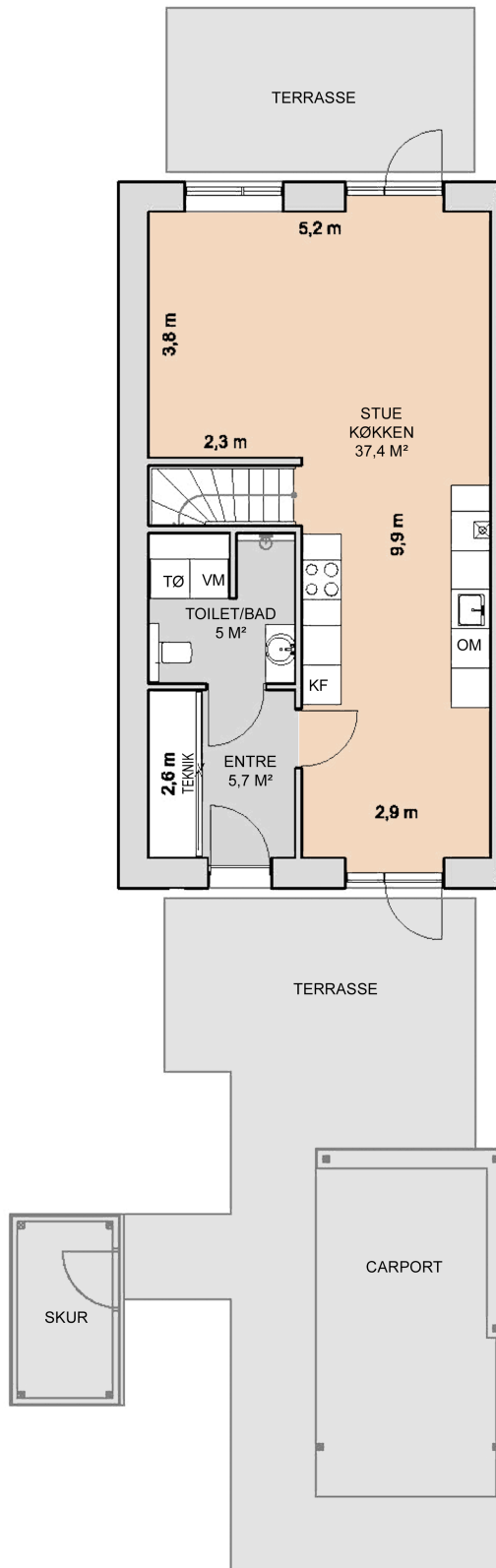
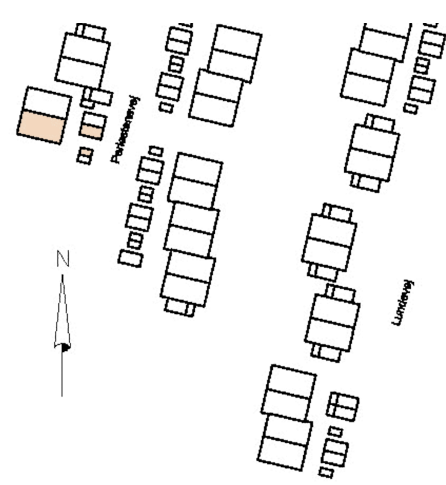
Antal værelser: 5  
Etage: St. og 1. sal  
BBR-areal: 125 m<sup>2</sup>  
Skur: 4,5 m<sup>2</sup>  
Carport: 14,5 m<sup>2</sup>  
Terrasse: 20 m<sup>2</sup>



# STØBERIET TUNE

Perlestensvej 29

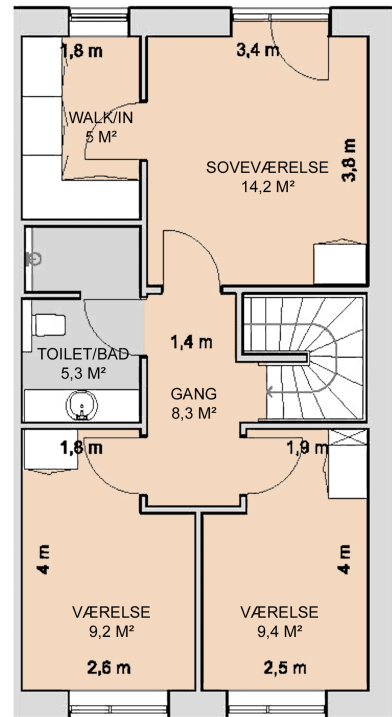
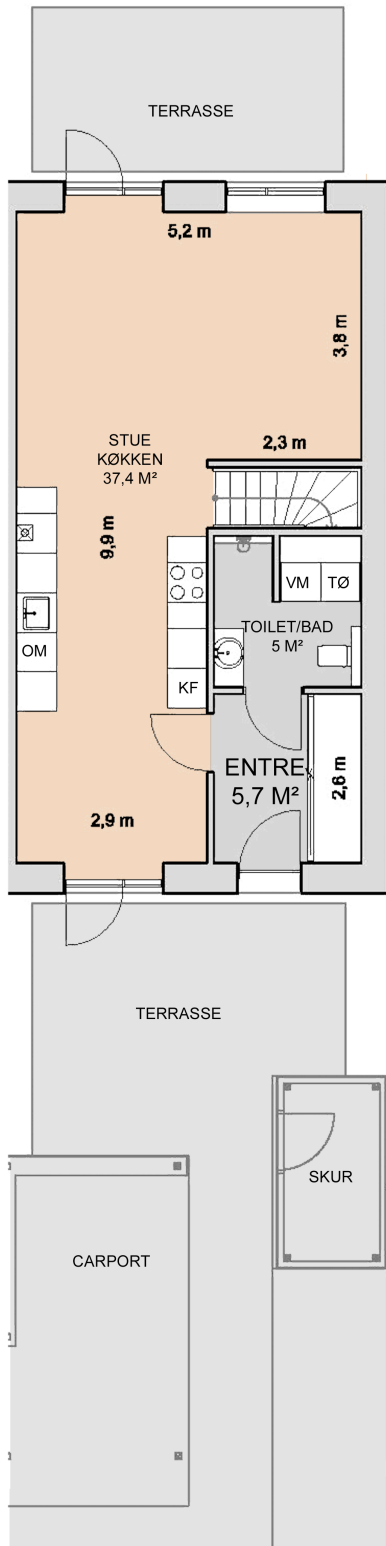
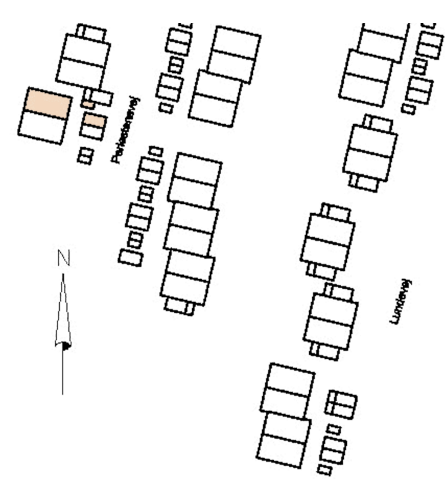
Antal værelser: 4  
Etage: St. og 1. sal  
BBR-areal: 125 m<sup>2</sup>  
Skur: 4,5 m<sup>2</sup>  
Carport: 14,5 m<sup>2</sup>  
Terrasse: 20 m<sup>2</sup>



# STØBERIET TUNE

Perlestensvej 31

Antal værelser: 4  
Etage: St. og 1. sal  
BBR-areal: 125 m<sup>2</sup>  
Skur: 4,5 m<sup>2</sup>  
Carport: 14,5 m<sup>2</sup>  
Terrasse: 20 m<sup>2</sup>

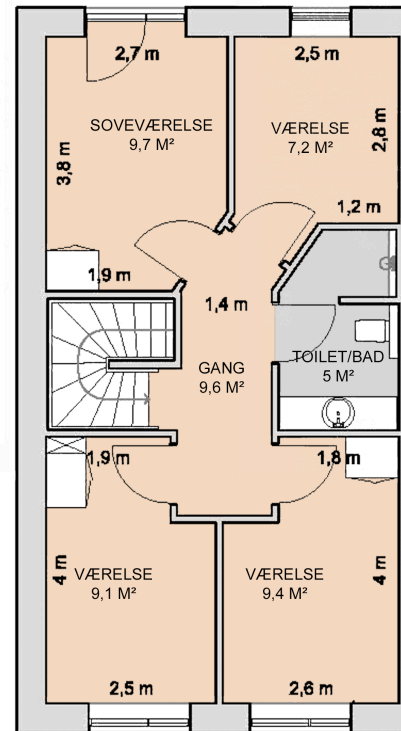
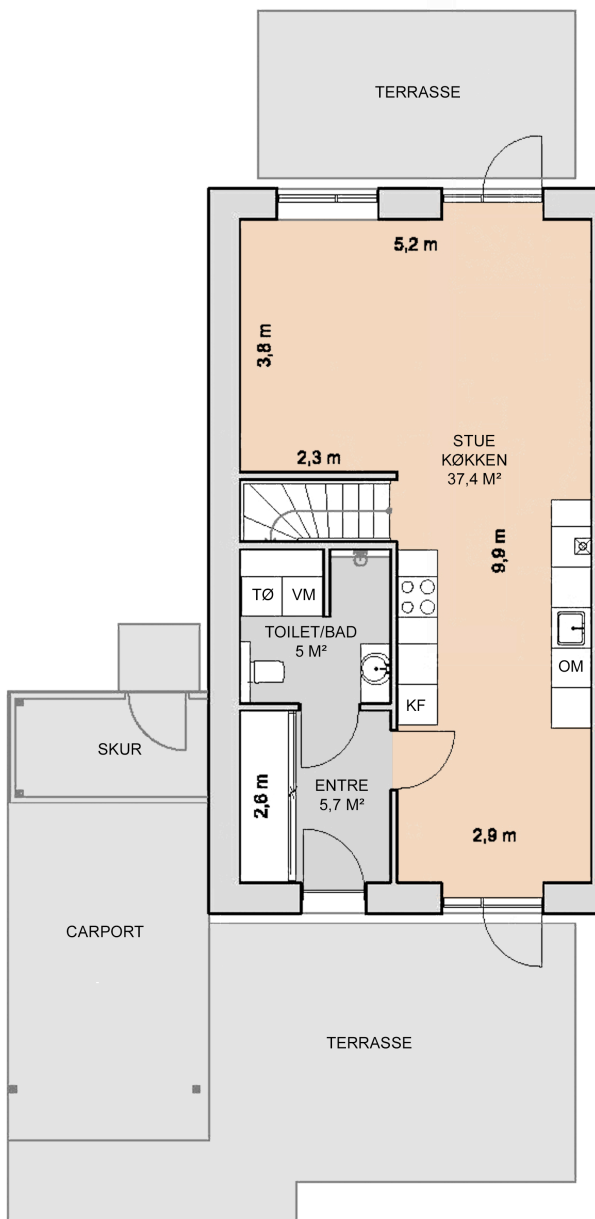
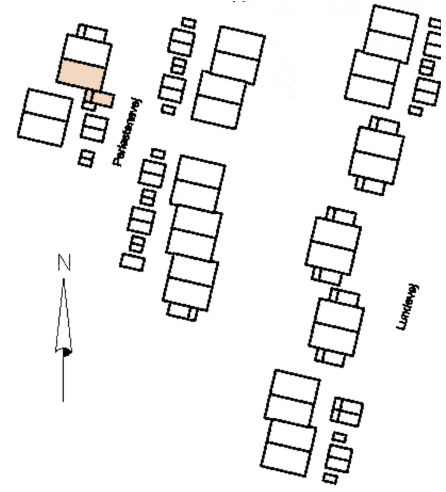




# STØBERIET TUNE

Perlestensvej 33

Antal værelser: 5  
Etage: St. og 1. sal  
BBR-areal: 125 m<sup>2</sup>  
Skur: 4,5 m<sup>2</sup>  
Carport: 14,5 m<sup>2</sup>  
Terrasse: 20 m<sup>2</sup>



# STØBERIET TUNE

Perlestensvej 35

Antal værelser: 5  
Etage: St. og 1. sal  
BBR-areal: 125 m<sup>2</sup>  
Skur: 4,5 m<sup>2</sup>  
Carport: 14,5 m<sup>2</sup>  
Terrasse: 20 m<sup>2</sup>

